



LUNIGIANA 2000

real estate

Ref. 358

Restored village house



BESCHREIBUNG

Charming **village house** with **terrace** set in a small hillside borgo, approximately at 400 metres above sea level.

The property, which has been recently **restored**, comprises:

- fully furnished living room-kitchen, bathroom and laundry room-pantry on ground floor;
- hall, two bathrooms and terrace on first floor.

Central heating (village gas network).

Partially furnished.

TECHNISCHE DETAILS

Nutzfläche

60 m²

Außenfläche

86 m²

Stockwerke

2

Zimmer

5

Schlafzimmer

2

Badezimmer

1

Terrasse

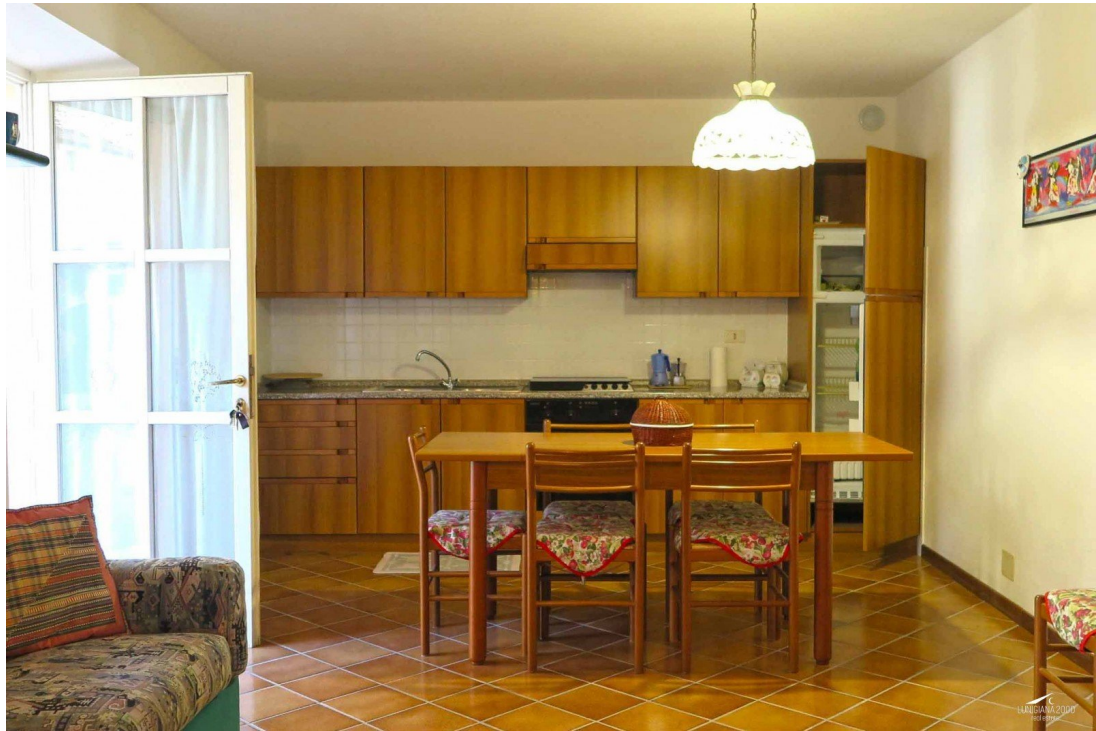
Ja

Status

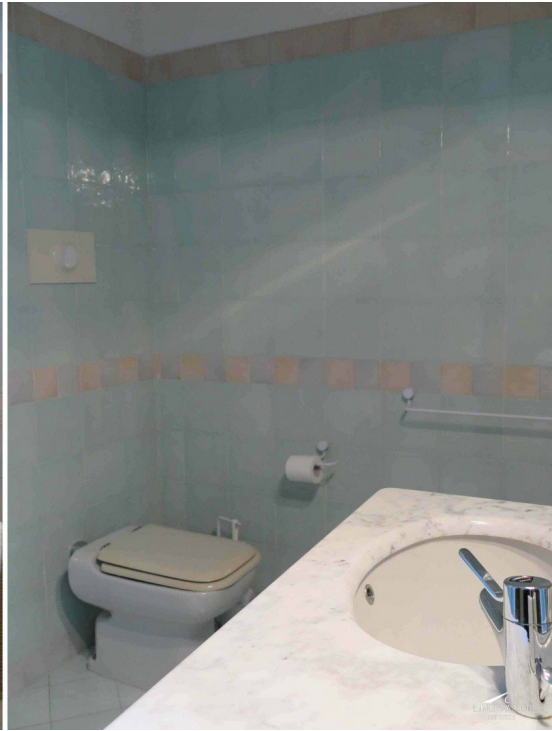
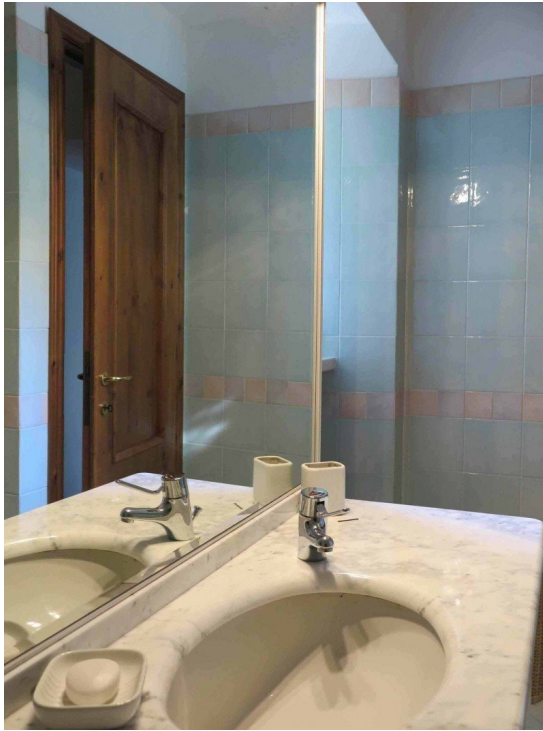
ristrutturato

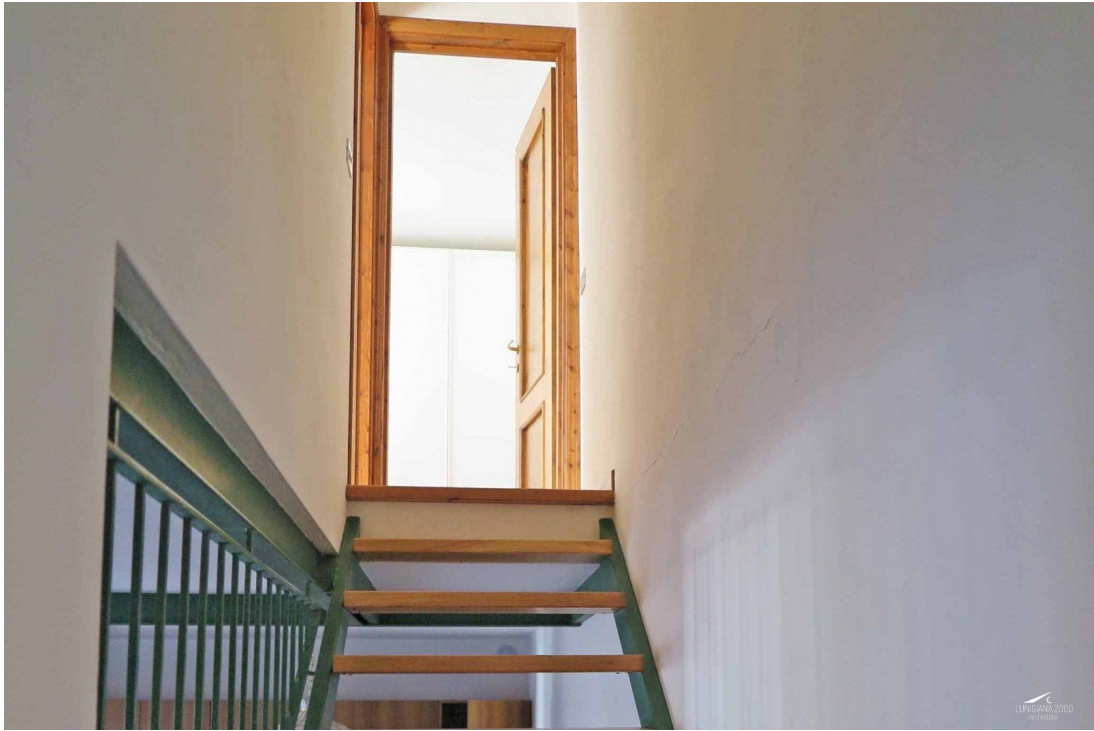
MESSAGES.PROPERTY_IMAGES







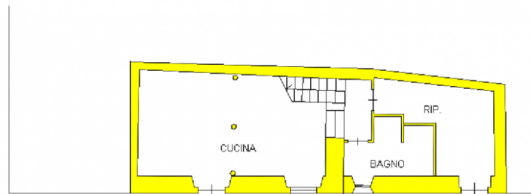








PIANTA PIANO TERRA



PIANTA PIANO PRIMO

