



LUNIGIANA 2000

real estate

Ref. 007A

Semi-detached house



BESCHREIBUNG

Semi-detached house on three levels with amazing panoramic views over the surrounding hills and Tuscan-Emilian Apennines, set just 2,5 km far from the centre of Bagnone, a medieval village with a fabulous castle.

The property consists of:

- entrance hall with stairwell, large taverna with fireplace and cellar/pantry opening onto a portico and a **garden**, kitchenette, bathroom, boiler room and two cellars on ground floor;
- hall, living room with fireplace opening onto a panoramic **terrace**, kitchen, study-store room, dressing room and bathroom with shower;
- the living room opens onto a very large **terrace** in the back of the house with a portico and a garden where it is also possible to grow vegetables, the whole on first floor;
- hall, four bedrooms, study/walk-in closet and bathroom with bath on second floor.

Central heating (oil).

There is also natural gas.

The house is sold sparingly furnished.

TECHNISCHE DETAILS

Nutzfläche

270 m²

Außenfläche

300 m²

Lärmpegel

1 - zona silenziosa

Stockwerke

3

Zimmer

12

Schlafzimmer

5

Badezimmer

3

Garten

200 m²

Grundstück

200 m²

Innenhof

65 m²

Keller

50 m²

Terrasse

72 m²

Vorbau

17 m²

Höhe ü. d. M.

360

Status

abitabile

Heizung

Autonomo a gas metano

Panoramablick

Ja

Blick auf den Apennin

Ja

Möbliert

Ja

Kategorie

G

MESSAGES.PROPERTY_IMAGES



















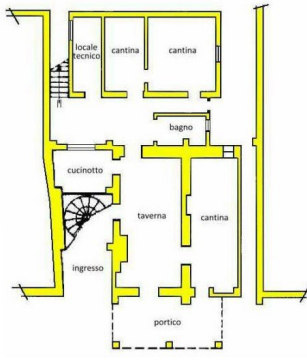




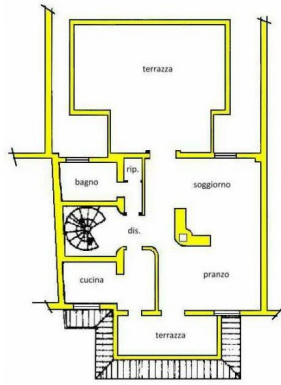




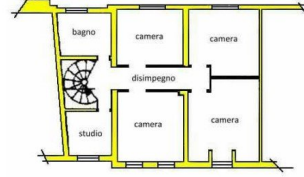




piano terra



piano primo



piano secondo