



LUNIGIANA 2000

real estate

Ref. 069A

Detached house



BESCHREIBUNG

Typical **detached house dated beginning of the 1900** with 2.500 sq m of **land** set in a sunny and private position with fabulous panoramic views, just 4 km far from the charming medieval borgo of Bagnone.

The property consists of:

- Entrance hall, living room, kitchen/dining room with fireplace, another entrance hall with frescoes, store room, cellar, woodshed and toilet on ground floor;
- Living room with frescoes and **terrace** with panoramic views over the valley, two double bedrooms and bathroom with shower and bath on first floor.

Central heating (propane gas).

New wooden roof.

Characteristic pergola with vines.

On the land there are fruit trees and olive groves.

TECHNISCHE DETAILS

Nutzfläche

135 m²

Außenfläche

165 m²

Lärmpegel

0 - zona molto silenziosa

Stockwerke

2

Zimmer

8

Schlafzimmer

2

Badezimmer

2

Garten

2533 m²

Grundstück

2533 m²

Innenhof

100 m²

Keller

30 m²

Stellplatz

Ja

Terrasse

Ja

Balkon

8 m²

Vorbau

Ja

Höhe ü. d. M.

320

Status

abitabile

Heizung

Autonomo a gas propano

Panoramablick

Ja

Kategorie

G

MESSAGES.PROPERTY_IMAGES



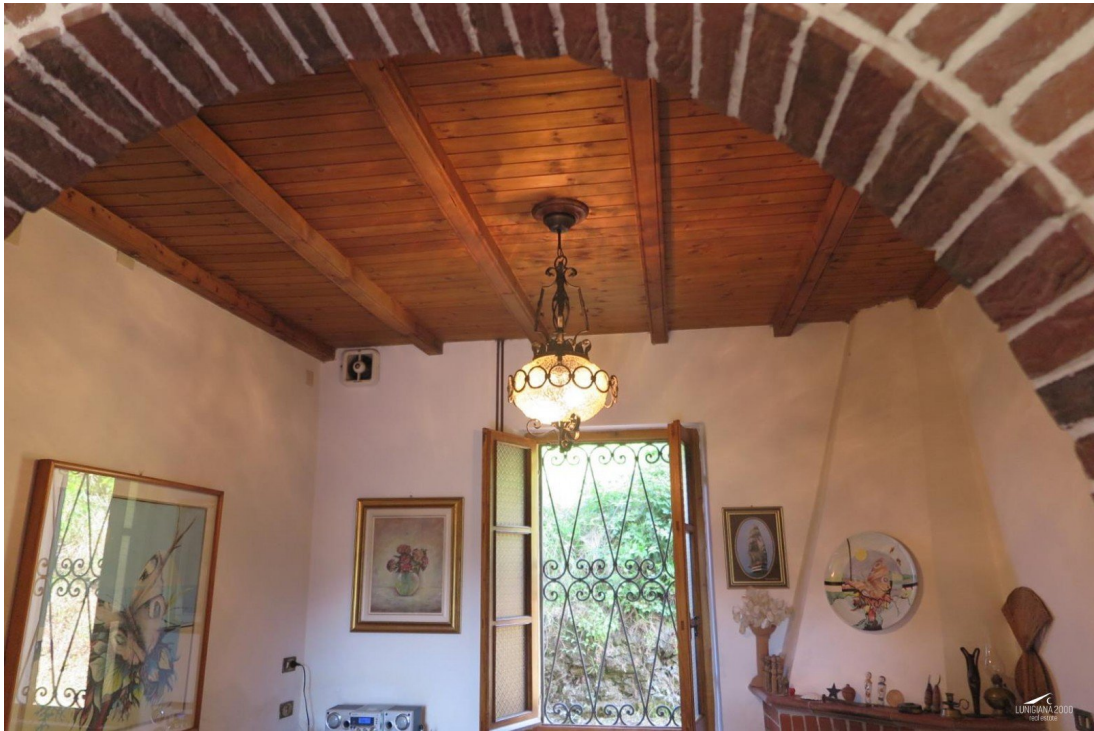


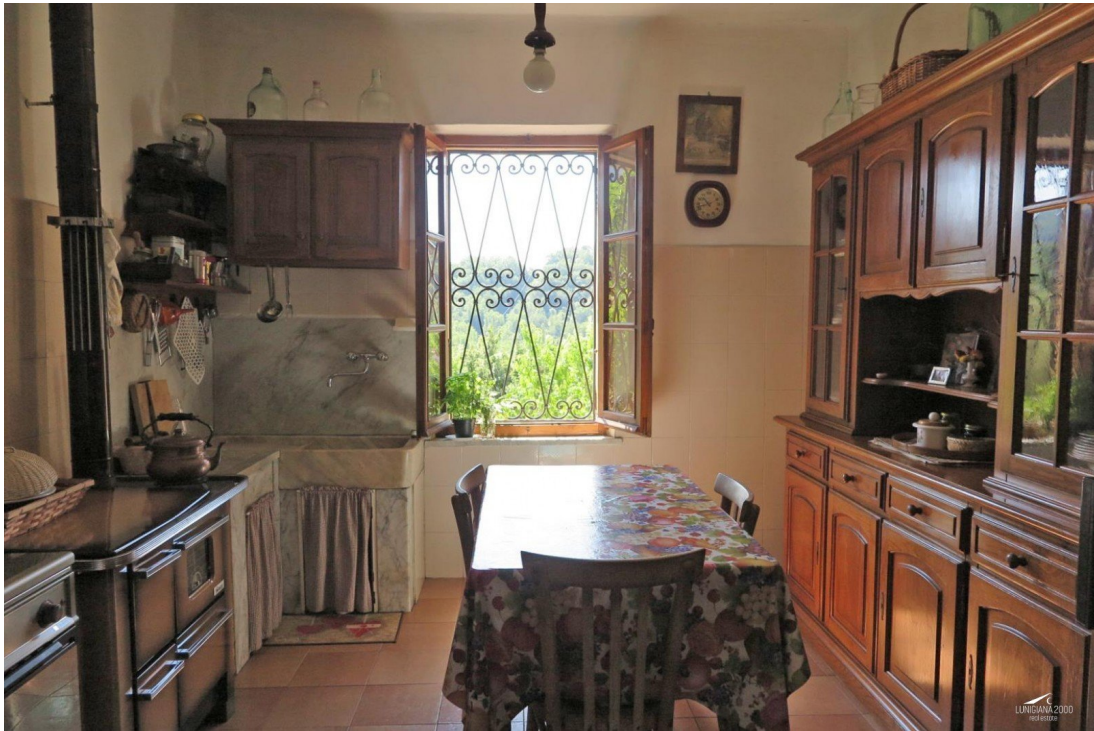












































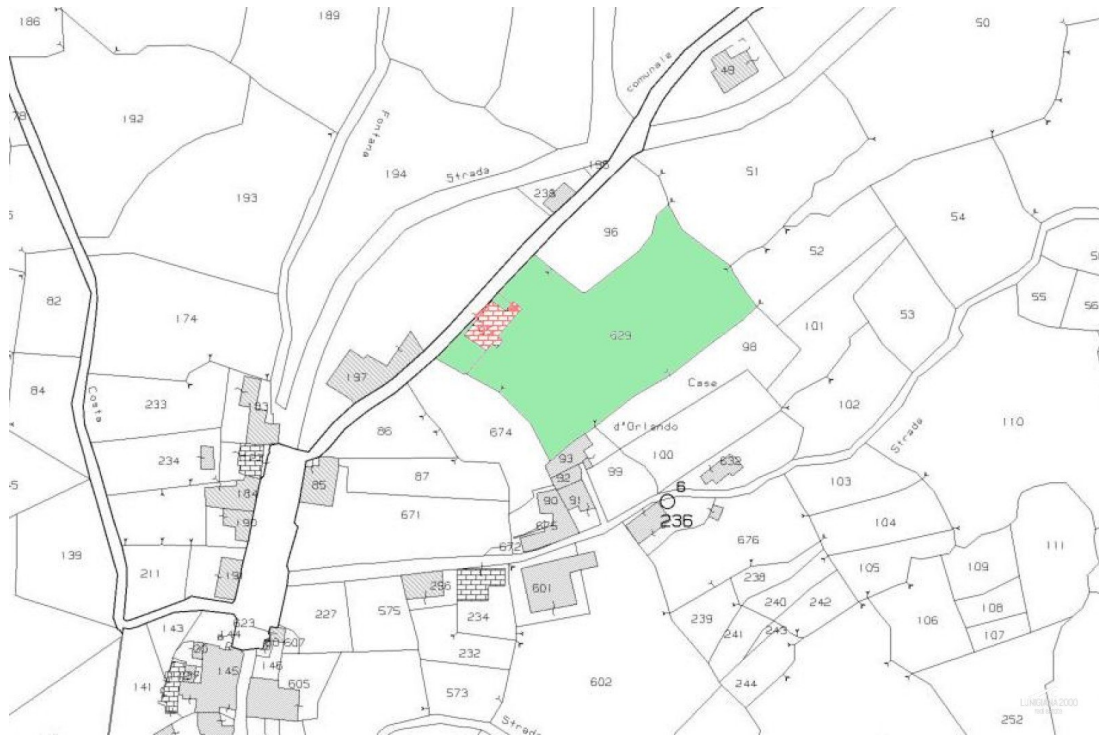


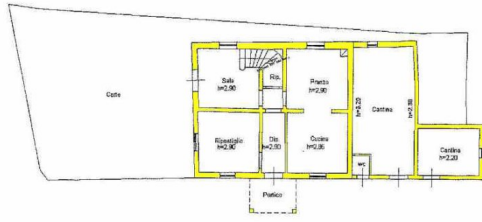




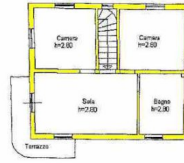








PIANO TERRA



PIANO PRIMO