



LUNIGIANA 2000

real estate

Ref. 055

New-built stone farmhouse



BESCHREIBUNG

New-built stone farmhouse with splendid panoramic views with 5 hectares of adjacent **land** and approximately 7 hectares of further dislocated land.

The property is surrounded by beautiful countryside among oak trees, olive groves and vineyards.

The farmhouse consists of two units:

- Characteristic **portico** with panoramic views, living room with open plan kitchen, hall, two bedrooms, mezzanine, dressing room and bathroom with shower on first floor;
- Living room with open plan kitchen, hallway, bedroom, mezzanine, bathroom with shower on first floor;
- **Portico**, very large room used as a laboratory for winemaking and bathroom on the ground floor;

- Large **warehouse-garage** on lower ground floor.

Central heating (propane gas).

Possibility to build a swimming pool.

TECHNISCHE DETAILS

Nutzfläche

300 m²

Außenfläche

350 m²

Lärmpegel

0 - zona molto silenziosa

Wasserquelle

Sorgente

Stockwerke

3

Zimmer

5

Schlafzimmer

3

Badezimmer

3

Grundstück

119437 m²

Keller

Ja

Garage

Ja

Stellplatz

100 m²

Terrasse

Ja

Vorbau

Ja

Höhe ü. d. M.

400

Status

ristrutturato

Heizung

Autonomo a gas propano

Panoramablick

Ja

Möbliert

Ja

Kategorie

G

MESSAGES.PROPERTY_IMAGES















































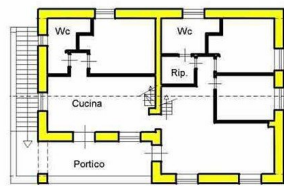
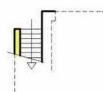




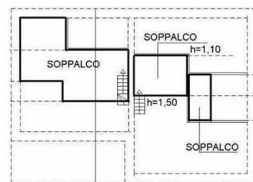




PIANO TERRA



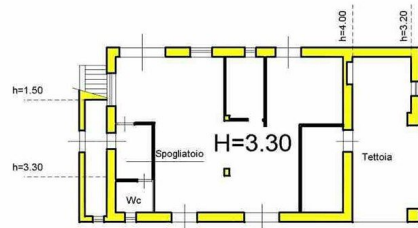
PIANO PRIMO



PIANO SECONDO



PIANO INTERRATO



PIANO TERRA
LABORATORIO PER VINIFICAZIONE

