



# LUNIGIANA 2000

real estate

**Ref. 002A**

---

# Superbly restored detached house



## BESCHREIBUNG

**Stone detached farmhouse tastefully restored** with a beautiful surrounding **park** of over 5.000 sq m and **outbuilding used as garage and storage** set In a wonderful natural setting, among olive trees, Turkey oaks and fruit trees, with a surprising panoramic view of the Apuan Alps.

The property, which has a typical **portico**, has two entrances on ground floor that lead to a large **veranda**, which leads to the hall with store room and stairwell to get in a characteristic living room with open plan kitchen and fireplace.

Going up through marble stairs, we reach a hallway on first floor where there is three bedrooms, bathroom and large panoramic **terrace** with stunning views over the majestic Apuan Alps.

The outbuilding of 100 sq m on one floor comprises **garage, laundry room, gym room and wood shed**, all with tiled floors, doors, windows and mosquito nets.

It is possible to build a swimming pool.

The farmhouse and the outbuilding are surrounded by a well-kept park with fruit trees and fully fenced.

The large automated gate allows car access to the property, while the small gate to the pedestrian area.

High quality of materials used for the restoration for the finishing touches, as well as for the details.

## **TECHNISCHE DETAILS**

Nutzfläche

220 m<sup>2</sup>

Außenfläche

250 m<sup>2</sup>

Lärmpegel

0 - zona molto silenziosa

Stockwerke

2

Zimmer

9

Schlafzimmer

3

Badezimmer

1

Grundstück

5388 m<sup>2</sup>

Innenhof

Ja

Keller

65 m<sup>2</sup>

Garage

35 m<sup>2</sup>

Stellplatz

Ja

Terrasse

20 m<sup>2</sup>

Vorbau

Ja

Höhe ü. d. M.

430

Status

ristrutturato

Heizung

Autonomo a gas propano

Panoramablick

Ja

Blick auf die Apuanen

Ja

Blick auf den Apennin

Ja

## **Kategorie**

G

MESSAGES.PROPERTY\_IMAGES











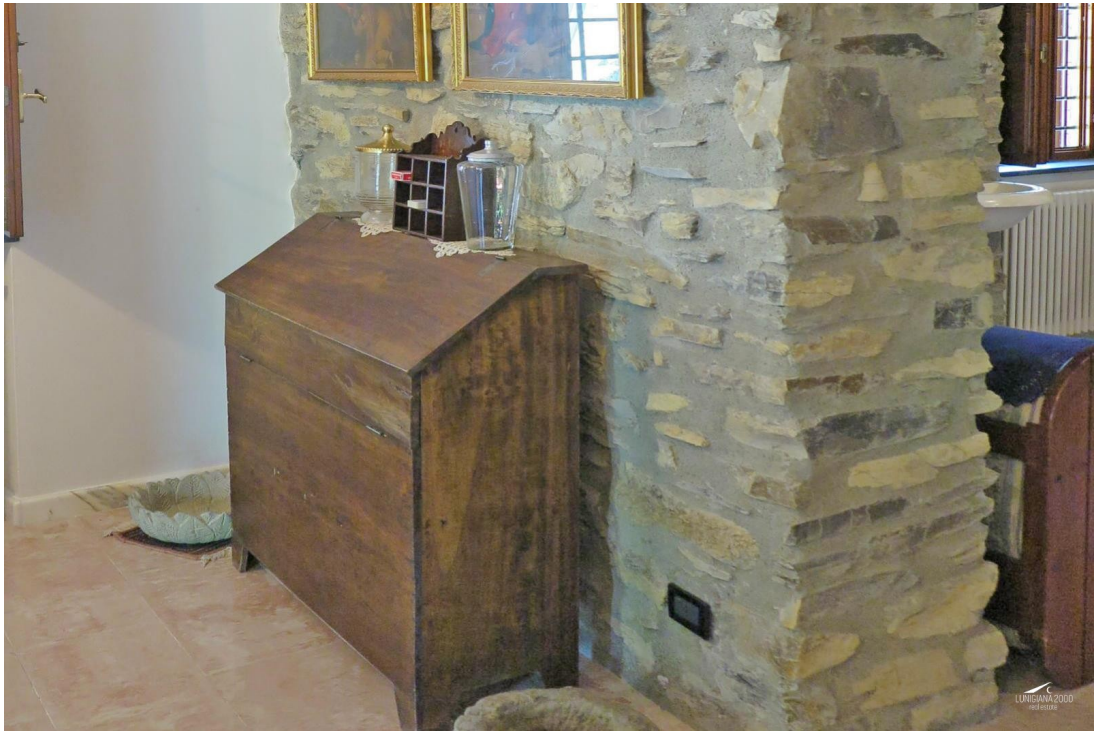














































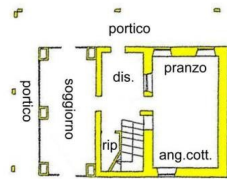
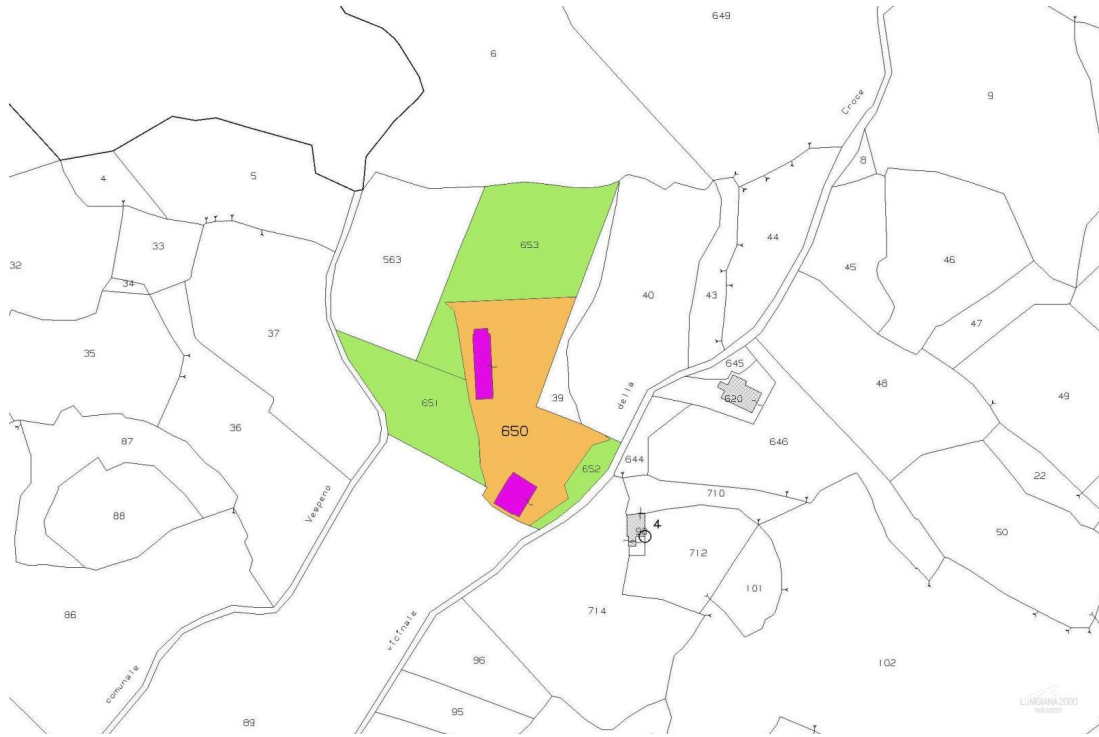












PIANO TERRA



PIANO PRIMO



PIANO TERRA