



# LUNIGIANA 2000

real estate

**Ref. 226**

# Semi-detached house



## BESCHREIBUNG

**Semi-detached house** with panoramic **terrace** set in a charming hillside village, at 460 metres above sea level, where there is a bar and a restaurant and the closest facilities are just 3 kilometres far.

The property consists of:

- Entrance-kitchen, bedroom and bathroom on ground floor;
- Another Entrance-dining room, bedroom and bathroom on first floor accessible through an external staircase;
- Bedroom with **balcony** and panoramic terrace on second floor.

**Central heating (natural gas).**

**The property also includes 26.924 sq m of land, mainly woodland.**

## **TECHNISCHE DETAILS**

Nutzfläche

105 m<sup>2</sup>

Außenfläche

165 m<sup>2</sup>

Lärmpegel

0 - zona molto silenziosa

Stockwerke

3

Zimmer

5

Schlafzimmer

3

Badezimmer

2

Grundstück

26924 m<sup>2</sup>

Terrasse

11 m<sup>2</sup>

Balkon

2 m<sup>2</sup>

Höhe ü. d. M.

460

Status

abitabile

Heizung

Autonomo a gas metano

Panoramablick

Ja

Blick auf den Apennin

Ja

Möbliert

Ja

## **Kategorie**

G

MESSAGES.PROPERTY\_IMAGES



















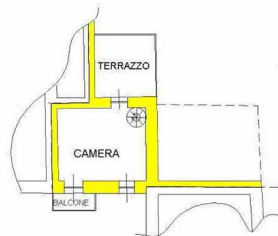




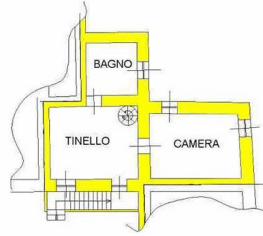




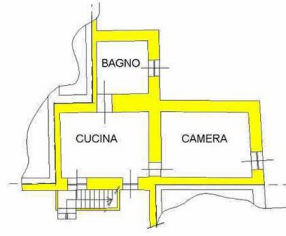




*PIANO SECONDO*



*PIANO PRIMO*



*PIANO TERRA*