



LUNIGIANA 2000

real estate

Ref. 005L

Village house



BESCHREIBUNG

Typical **stone house whose restoration requires finishing** with beautiful views over the valley set in an hillside village at 460 metres above sea level.

The property, which is very close to a bar and a grocery shop, consists of:

- Entrance hall, stairwell and cellar on ground floor, hallway, living room, kitchen with thermo-fireplace on first floor;
- Hall, bedroom and bathroom on first floor

Central heating (natural gas)

TECHNISCHE DETAILS

Nutzfläche

110 m²

Außenfläche

160 m²

Lärmpegel

1 - zona silenziosa

Stockwerke

3

Zimmer

6

Schlafzimmer

1

Badezimmer

1

Höhe ü. d. M.

460

Status

da ristrutturare

Heizung

Termo-Camino

Panoramablick

Ja

Blick auf die Apuanen

Ja

MESSAGES.PROPERTY_IMAGES













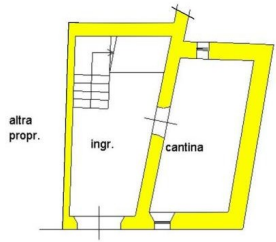




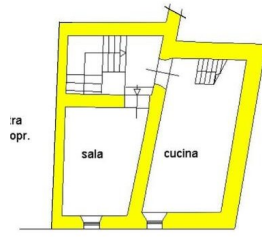




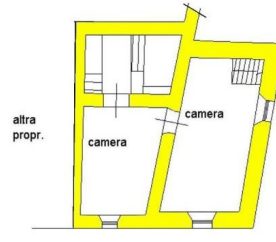




PIANTA PIANO TERRA H.290



PIANTA PIANO PRIMO H.2.34



PIANTA PIANO SECONDO H.2.74