



# LUNIGIANA 2000

real estate

**Ref. 009L**

# Detached stone house



## BESCHREIBUNG

Typical **stone detached village** house with a large panoramic **terrace** over the Bosi Castle set in one of the most beautiful and characteristic medieval borgo in Lunigiana.

The property, just 500 metres from the charming town of Fivizzano and 50 metres from the public parking, consists of:

- Large entrance with veranda area, living room with fireplace with wooden beams, kitchen and bathroom with bath on ground floor,
- Double bedroom with terrace, another bedroom, small store room with washing machine and dryer, bathroom with shower which can be accessed by the both bedroom on first floor,
- Entrance hall, store room and cellar on lower ground floor.

**Central heating (natural gas).**

## **Fully furnished**

### **TECHNISCHE DETAILS**

Nutzfläche

150 m<sup>2</sup>

Außenfläche

220 m<sup>2</sup>

Wasserquelle

Fiume/Torrente

Stockwerke

3

Zimmer

5

Schlafzimmer

2

Badezimmer

2

Keller

50 m<sup>2</sup>

Terrasse

17 m<sup>2</sup>

Höhe ü. d. M.

350

Status

ristrutturato

Heizung

Autonomo a gas metano

Panoramablick

Ja

Möbliert

Ja

## **Kategorie**

G

MESSAGES.PROPERTY\_IMAGES

















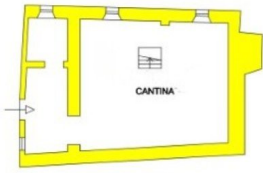




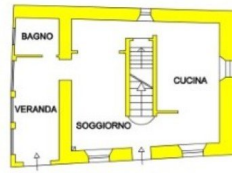




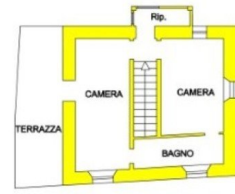




PIANO SEMINTERRATO



PIANO TERRA



PIANO PRIMO