



LUNIGIANA 2000

real estate

Ref. 470A

Semi-detached house



BESCHREIBUNG

Village house from ground to roof, free on three sides, with **garden** set very close to a charming village with thermal spa with sulphurous water.

The property, on two levels, comprises:

- Entrance with stairwell and store room, kitchen with fireplace and pantry, cellar, an under terrace room and boiler room on ground floor;
- Hallway, two double bedrooms plus another bedroom with large panoramic **terrace** through which it is possible to access to the fourth bedroom on first floor.

Central heating (oil).

The property also includes:

- An **outbuilding** used as storage on two levels partially restored (new facade and roof) and a **stable-barn** on two levels requiring renovation.

TECHNISCHE DETAILS

Nutzfläche

150 m²

Lärmpegel

0 - zona molto silenziosa

Stockwerke

2

Zimmer

5

Schlafzimmer

3

Badezimmer

1

Garten

Ja

Grundstück

685 m²

Innenhof

Ja

Keller

Ja

Stellplatz

Ja

Terrasse

Ja

Höhe ü. d. M.

250

Status

da ristrutturare

Heizung

Autonomo a gasolio

Panoramablick

Ja

Möbliert

Ja

Kategorie

G

MESSAGES.PROPERTY_IMAGES























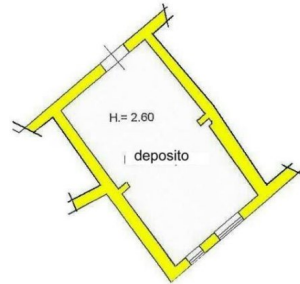
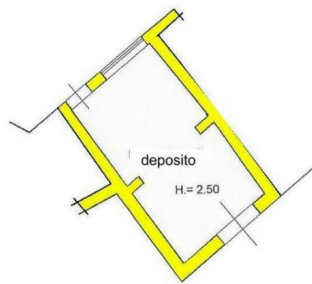
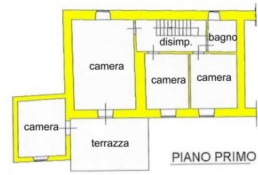
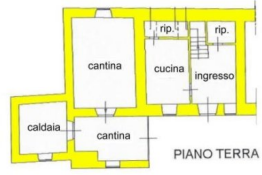












PIANO TERRA

PIANO PRIMO

