



LUNIGIANA 2000

real estate

Ref. 181A

Stone farmhouse



BESCHREIBUNG

Detached stone farmhouse surrounded by flat **land** of approximately 9.000 sq m, set in a very private position, easily accessible by car, just 7 kilometres far from a motorway exit.

The property comprises:

- Kitchen with stairwell, vaulted cellar, other two rooms and a large vaulted space used as covered parking on ground floor;
- Hallway, two bedrooms, bathroom with shower and large panoramic **terrace** on first floor.
- It is possible to reach the terrace both through an internal and an external staircase.

Central heating (natural gas).

The most of the land is vineyards and a part of the land is woodland.

There is a **ruined outbuilding**; it is possible to use its cubic space to expand the farmhouse.

Excellent solution for business accommodation.

Possibility to build a swimming pool.

TECHNISCHE DETAILS

Nutzfläche

135 m²

Außenfläche

150 m²

Lärmpegel

0 - zona molto silenziosa

Stockwerke

2

Zimmer

5

Schlafzimmer

2

Badezimmer

1

Grundstück

9000 m²

Innenhof

Ja

Keller

Ja

Stellplatz

Ja

Terrasse

Ja

Vorbau

Ja

Höhe ü. d. M.

235

Status

abitabile

Heizung

Autonomo a gas propano

Panoramablick

Ja

Blick auf den Apennin

Ja

Kategorie

G

MESSAGES.PROPERTY_IMAGES























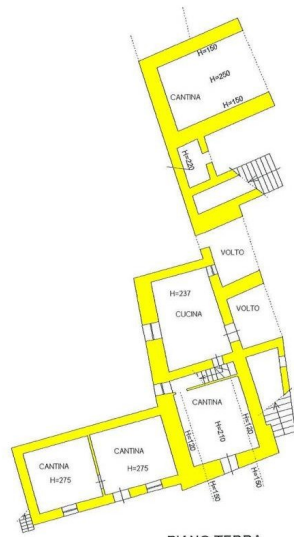
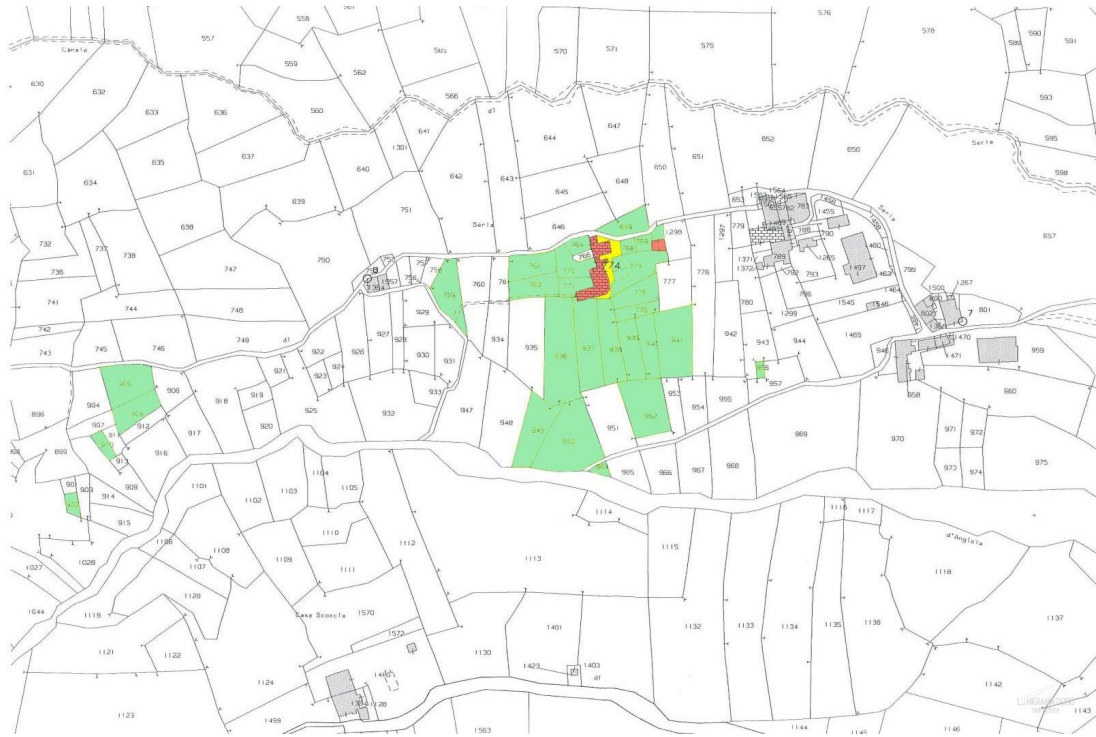




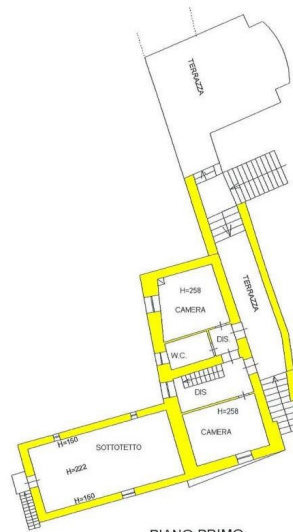








PIANO TERRA



PIANO PRIMO