



LUNIGIANA 2000

real estate

Ref. 518

Detached house



BESCHREIBUNG

Detached house with **courtyard** and fabulous panoramic views over the Tuscan-Emilian Apennines, situated in a lovely charming hillside village at 540 metres above sea level and with bar, restaurants, chemist, grocery shop and bakery.

The property, divided into two units, consists of;

- Entrance hall, two cellars and bathroom with bath on lower ground floor;
- **Portico**, entrance hall, kitchen, small dining room, two double bedrooms, bathroom with bath and panoramic **terrace** on ground floor,
- Panoramic **terrace**, kitchen, living room, two double bedrooms, store room and bathroom with bath on first floor - this floor is accessible through an external staircase.

No central heating.

TECHNISCHE DETAILS

Nutzfläche

110 m²

Außenfläche

165 m²

Lärmpegel

0 - zona molto silenziosa

Stockwerke

3

Zimmer

8

Schlafzimmer

4

Badezimmer

2

Garten

250 m²

Grundstück

250 m²

Innenhof

Ja

Keller

30 m²

Terrasse

10 m²

Balkon

6 m²

Vorbau

4 m²

Höhe ü. d. M.

540

Energieklasse

345.55 Kw/h m²

Status

abitabile

Heizung

Inesistente

Panoramablick

Ja

Blick auf den Apennin

Ja

Möbliert

Ja

Kategorie

G

MESSAGES.PROPERTY_IMAGES





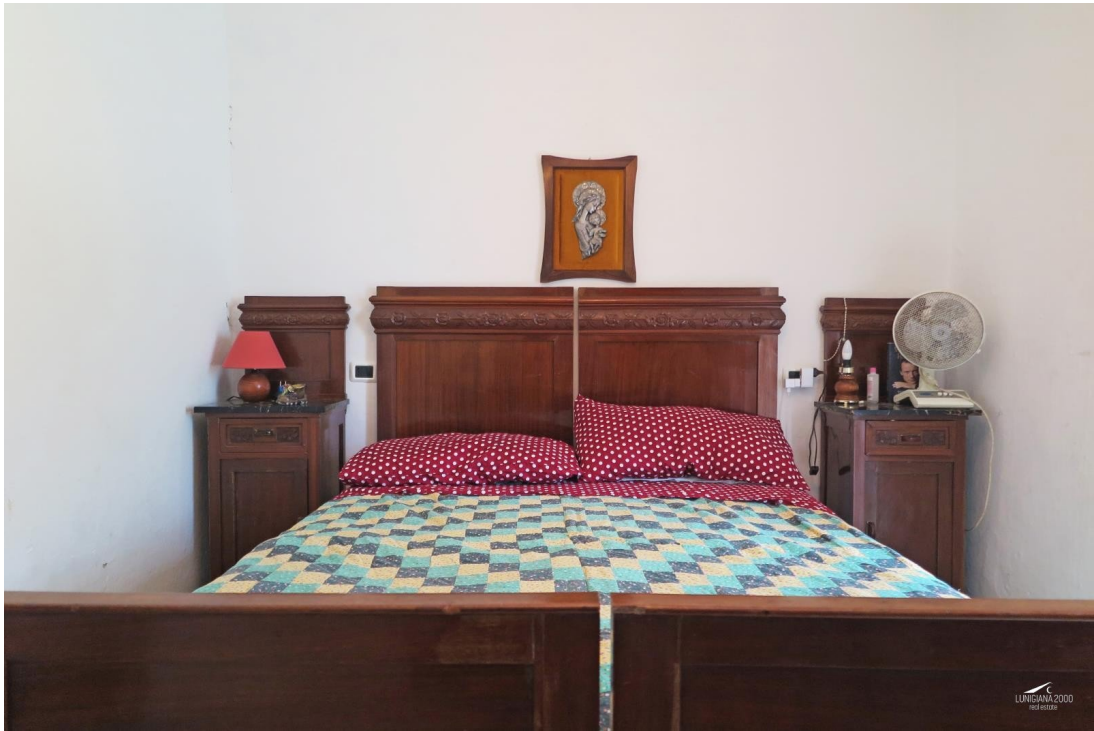






















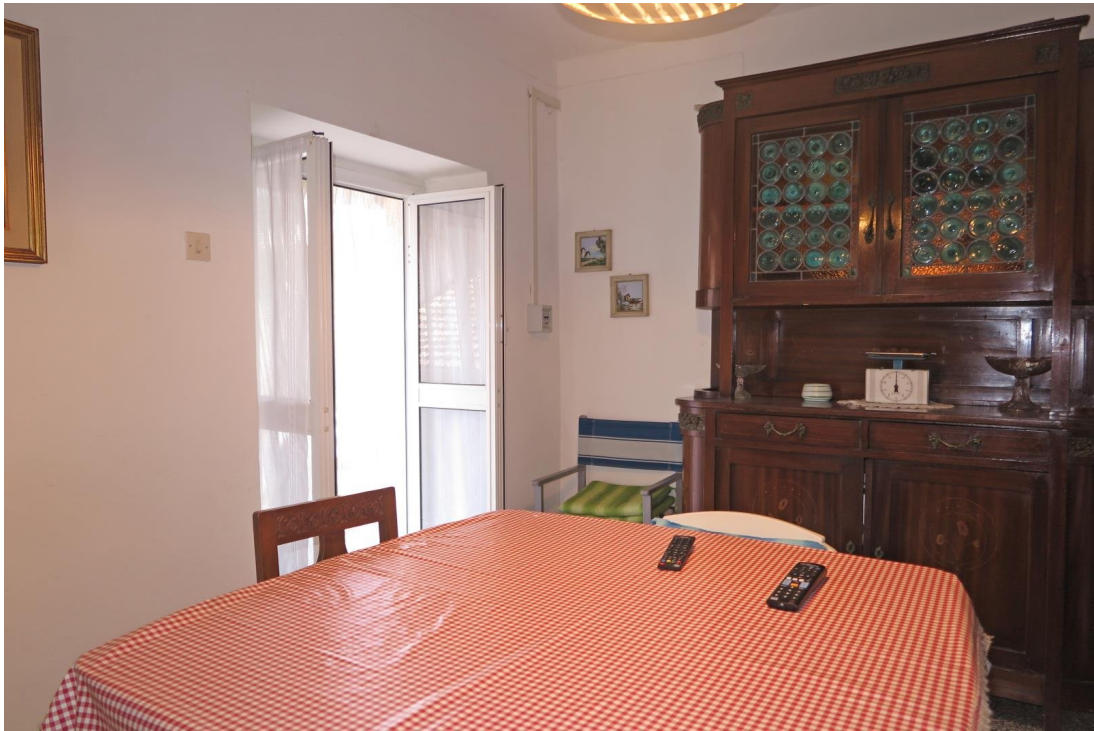
























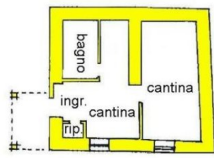




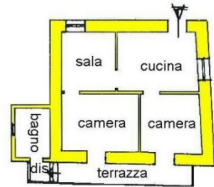




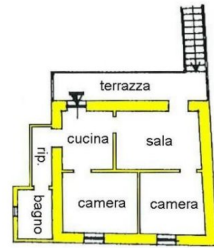




PS



PT



P1

