



LUNIGIANA 2000

real estate

Ref. 560A

Semi-detached house



BESCHREIBUNG

Semi-detached house with a large **terrace** and a **garden** set in a hamlet at 645 meters above sea level with amazing panoramic views over the Apuan Alps.

The property, free on three sides, consists of:

- two cellars and a storage on lower ground floor;
- large tiled **courtyard**, entrance hall, living room, hallway, dining room, kitchen, bathroom with bath and store room on ground floor;
- hall, two double bedrooms, dressing room, bathroom with bath, hallway, other three double bedrooms and large panoramic terrace on first floor.

Central heating (propane gas).

It is possible to reach the house through an asphalt road and park a car opposite the property.

TECHNISCHE DETAILS

Nutzfläche

255 m²

Außenfläche

375 m²

Lärmpegel

0 - zona molto silenziosa

Stockwerke

3

Zimmer

8

Schlafzimmer

5

Badezimmer

2

Grundstück

Ja

Innenhof

40 m²

Keller

48 m²

Stellplatz

Ja

Terrasse

32 m²

Höhe ü. d. M.

645

Status

abitabile

Heizung

Autonomo a gas metano

Panoramablick

Ja

Blick auf die Apuanen

Ja

Blick auf den Apennin

Ja

Möbliert

Ja

Kategorie

G

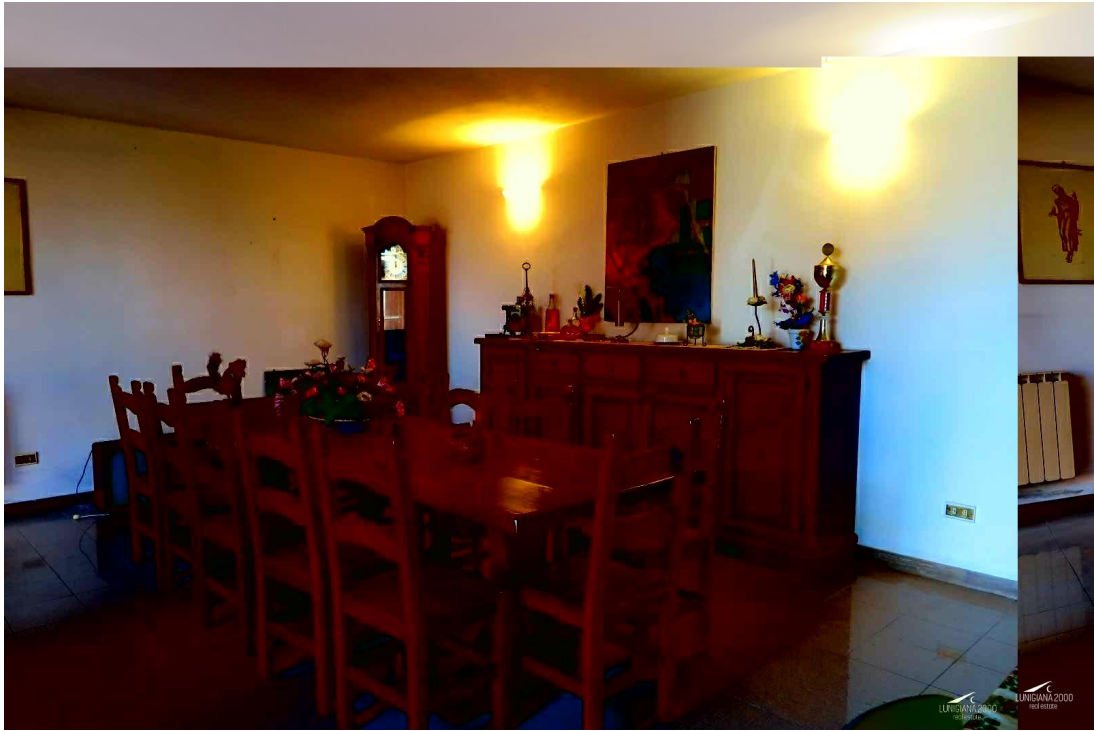
MESSAGES.PROPERTY_IMAGES













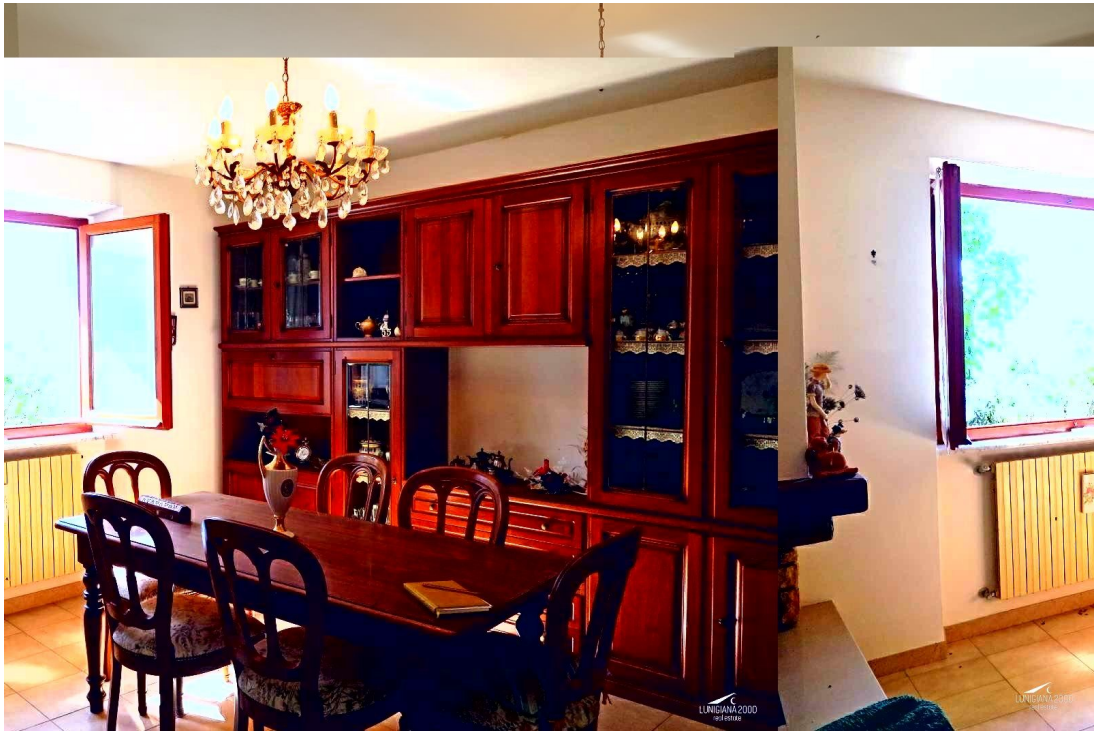






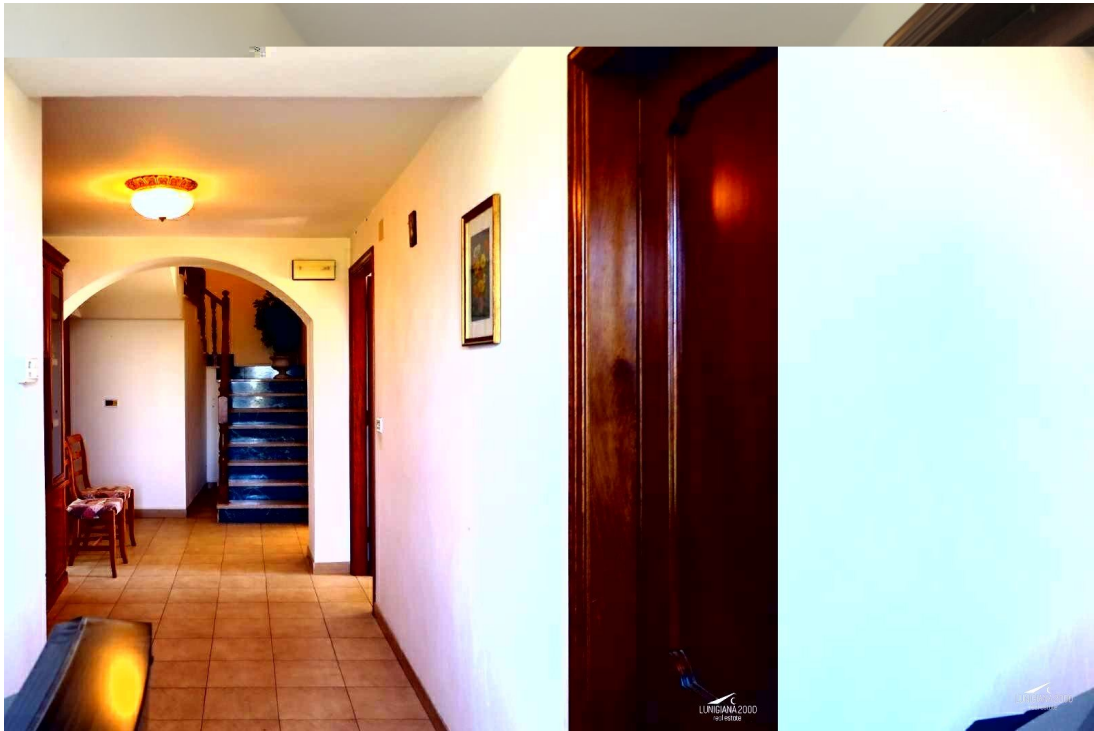


















































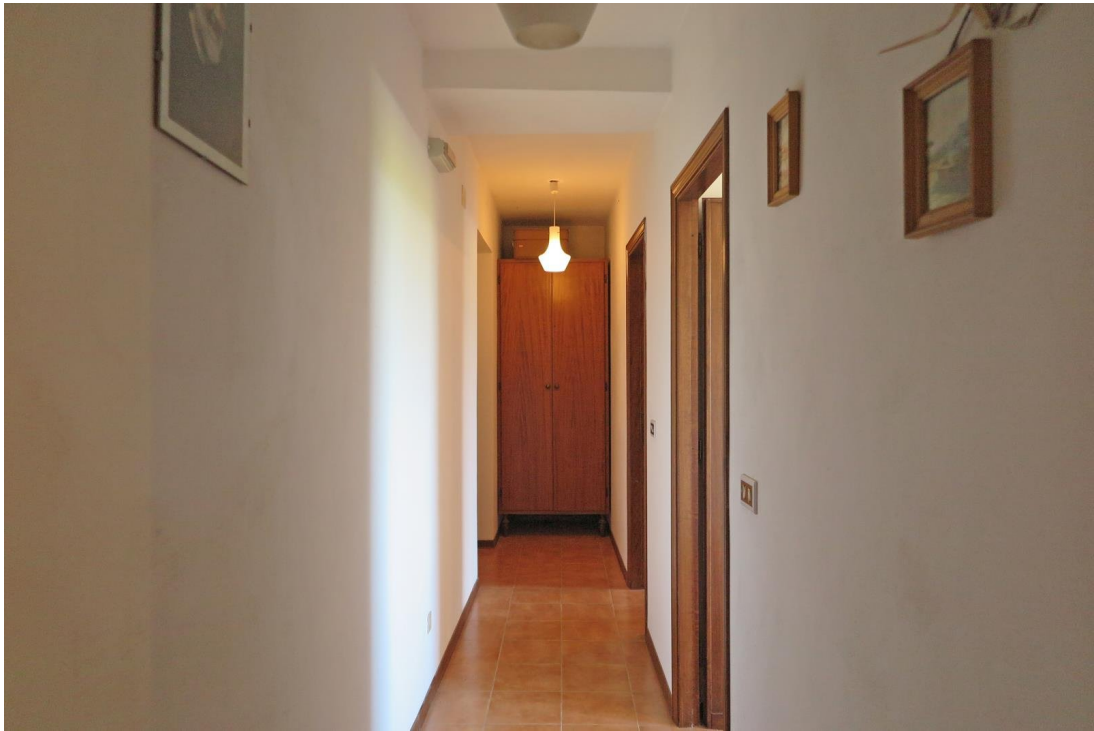


















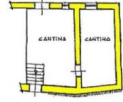




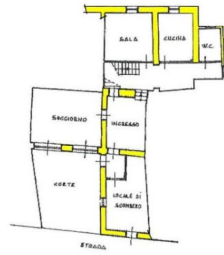




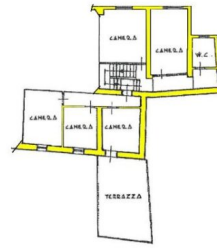
PIANO SEMINTERRATO



PIANO SEMINTERRATO



PIANO TERRA



PIANO PRIMO