



LUNIGIANA 2000

real estate

Ref. 606A

Stone farmhouse



BESCHREIBUNG

Stone farmhouse with courtyard, land and amazing panoramic views set in a charming medieval village with facilities such as bars, restaurants, bakeries, grocery shops, bank, shops and so on.

The property, free on three sides, consists of:

- three cellars on ground floor;
- entrance hall, kitchenette, bathroom with shower, large kitchen, hallway, two double bedrooms and bathroom with bath on first floor.

Central heating (natural gas).

The property also includes a detached warehouse used as wood shed.

TECHNISCHE DETAILS

Nutzfläche

200 m²

Außenfläche

230 m²

Lärmpegel

0 - zona molto silenziosa

Stockwerke

2

Zimmer

4

Schlafzimmer

2

Badezimmer

2

Garten

4000 m²

Grundstück

4000 m²

Keller

Ja

Stellplatz

4 m²

Terrasse

2 m²

Höhe ü. d. M.

300

Status

abitabile

Heizung

Autonomo a gas metano

Panoramablick

Ja

Blick auf den Apennin

Ja

Möbliert

Ja

Kategorie

G

MESSAGES.PROPERTY_IMAGES

























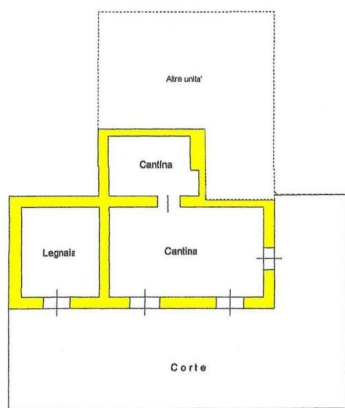




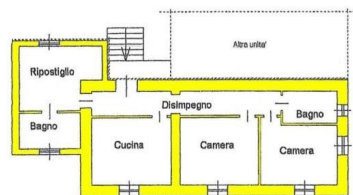




Piano Terra



Piano Terra



Piano Primo