



# LUNIGIANA 2000

real estate

**Ref. 246A**

---

# Typical stone house



## BESCHREIBUNG

**Typical stone house** set in a charming medieval village with amenities such as shops, bars, restaurants, bakeries, bank, chemista and so on.

The property, free on three sides and on three levels, comprises:

- entrance hall, kitchenette with fireplace, taverna and bathroom on ground floor;
- hallway, kitchen and living room with **balcony** on first floor;
- hall, toilet and two bedrooms on second floor.

**Central heating (natural gas).**

The car can be parked at approximately 60 meters far from the house.

## TECHNISCHE DETAILS

Nutzfläche  
120 m<sup>2</sup>  
Außenfläche  
150 m<sup>2</sup>  
Lärmpegel  
0 - zona molto silenziosa  
Wasserquelle  
Fiume/Torrente  
Stockwerke  
3  
Zimmer  
6  
Schlafzimmer  
2  
Badezimmer  
2  
Innenhof  
Ja  
Balkon  
4 m<sup>2</sup>  
Höhe ü. d. M.  
230  
Status  
abitabile  
Heizung  
Autonomo a gas metano  
Panoramablick  
Ja  
Möbliert  
Ja

## **Kategorie**

G

MESSAGES.PROPERTY\_IMAGES



















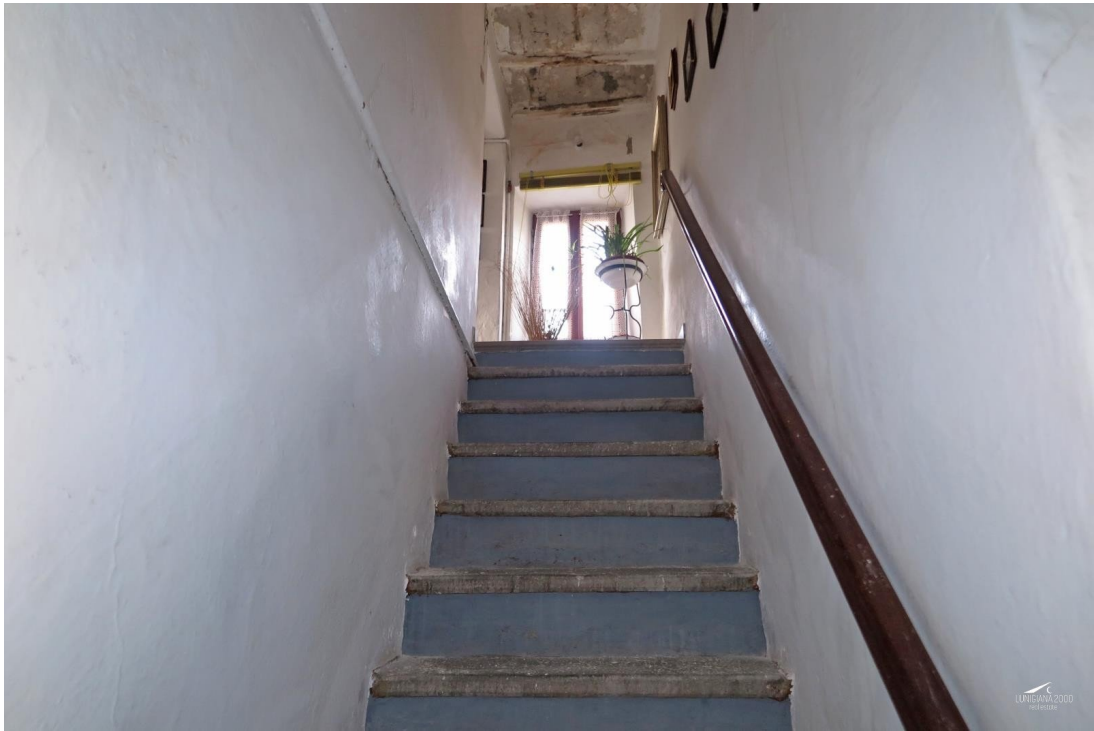














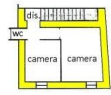












piano secondo



piano primo



piano terra