



# LUNIGIANA 2000

real estate

**Ref. 615A**

---

# Detached house of the early twentieth century



## BESCHREIBUNG

**Detached house of the early twentieth century** with a **small garden, parking space and panoramic terrace** set in a charming medieval village with facilities.

The property consists of;

- 7 cellars on lower ground floor;
- Living room with pellet burning stove, kitchen, walk-in closet, bedroom, study and bathroom with shower on ground floor (right side);
- Under the terrace-apartment with large room, kitchenette and bathroom with shower in ground floor;
- Hall, two bedrooms and bathroom with shower on ground floor (left side);

- Hallway, kitchen, living room with dining area, two double bedrooms with air conditioning, bathroom with shower, **balcony** and large terrace on first floor.

**Central heating (natural gas).**

**TECHNISCHE DETAILS**

Nutzfläche

340 m<sup>2</sup>

Außenfläche

430 m<sup>2</sup>

Lärmpegel

1 - zona silenziosa

Stockwerke

3

Zimmer

8

Schlafzimmer

6

Badezimmer

4

Garten

46 m<sup>2</sup>

Grundstück

46 m<sup>2</sup>

Keller

130 m<sup>2</sup>

Stellplatz

Ja

Terrasse

42 m<sup>2</sup>

Balkon

3 m<sup>2</sup>

Höhe ü. d. M.

230

Energieklasse

250.50 Kw/h m<sup>2</sup>

Status

abitabile

Heizung

Autonomo a gas metano

Panoramablick

Ja

Blick auf den Apennin

Ja

Möbliert

Ja

## **Kategorie**

G

MESSAGES.PROPERTY\_IMAGES

























































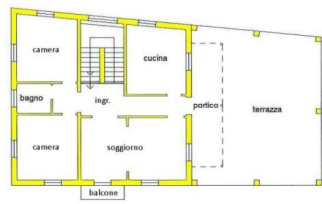




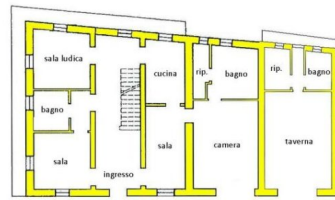




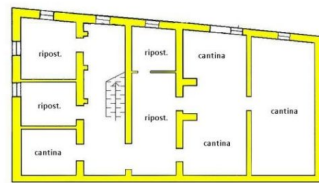




PIANO PRIMO



PIANO TERRA



PIANO S1

