



LUNIGIANA 2000

real estate

Ref. 004B

Portion of house



BESCHREIBUNG

Portion of house with **two large terraces** with amazing panoramic views over the Tuscan-Emilian Apennines and a **garden** set in an hillside borgo, at 340 meters above sea level.

The property comprises:

- kitchen opening onto two panoramic terraces and sitting room on ground floor;
- hall, double bedroom and bathroom with shower on lower level;
- cellar-laundry room on lower ground floor.

Central heating (natural gas).

The property also includes a **small stone outbuilding** used as tool shed which is on the garden of 200 sq m, where it is possible to park two or three cars.

TECHNISCHE DETAILS

Nutzfläche

60 m²

Außenfläche

86 m²

Lärmpegel

0 - zona molto silenziosa

Stockwerke

1

Zimmer

3

Schlafzimmer

2

Badezimmer

1

Garten

207 m²

Grundstück

207 m²

Keller

Ja

Stellplatz

3 m²

Terrasse

Ja

Höhe ü. d. M.

340

Status

abitabile

Heizung

Autonomo a gas metano

Panoramablick

Ja

Blick auf die Apuanen

Ja

Blick auf den Apennin

Ja

Möbliert

Ja

Kategorie

G

MESSAGES.PROPERTY_IMAGES

























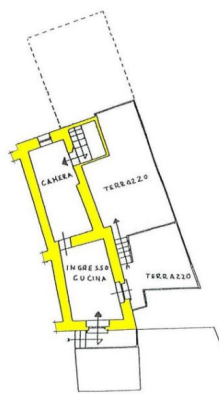
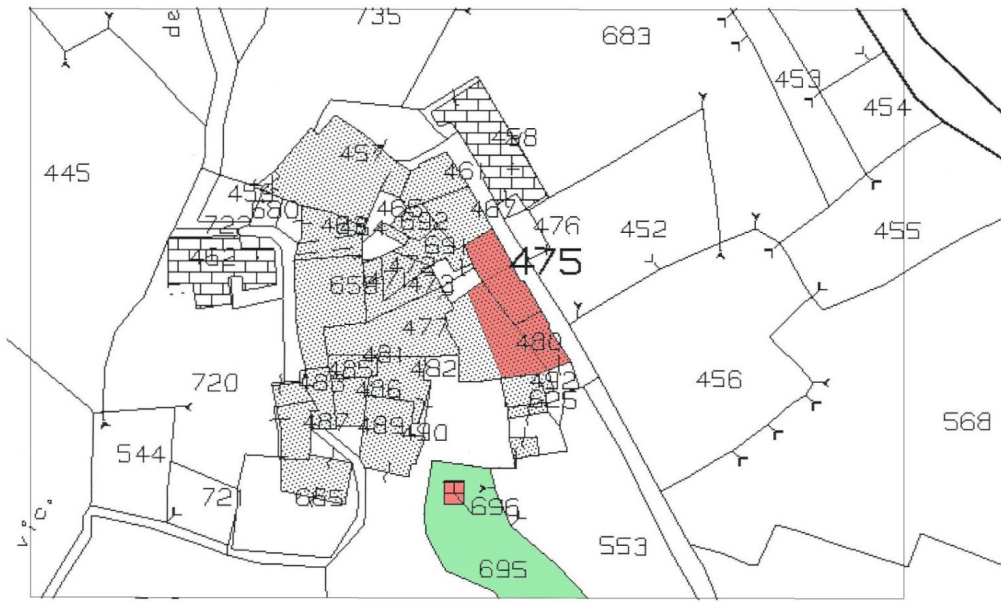




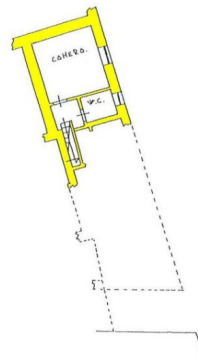




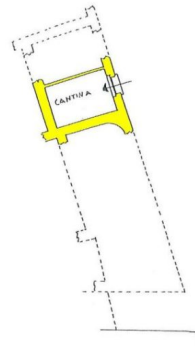




PIANO TERRA



1° PIANO SOTTOSTRADA



2° PIANO SOTTOSTRADA