



LUNIGIANA 2000

real estate

Ref. 047

Restored semi-detached stone house



BESCHREIBUNG

Restored semi-detached stone house with panoramic **terrace** situated in a typical charming medieval borgo with a marvellous Malaspina Castle.

The property, free on three sides, comprises:

- **Courtyard** and two cellars on second lower ground floor;
- Entrance hall with stairwell, kitchen, terrace and bathroom on lower ground floor;
- Stairwell, hall, two bedrooms, **balcony** and bathroom on ground floor;
- Double bedroom on first floor.

Central heating (natural gas)

TECHNISCHE DETAILS

Nutzfläche
70 m²
Außenfläche
145 m²
Lärmpegel
0 - zona molto silenziosa
Stockwerke
4
Zimmer
6
Schlafzimmer
3
Badezimmer
2
Grundstück
1995 m²
Innenhof
8 m²
Keller
30 m²
Terrasse
9 m²
Balkon
1 m²
Vorbau
9 m²
Höhe ü. d. M.
300
Status
ristrutturato
Heizung
Autonomo a gas metano
Panoramablick
Ja

Kategorie

G

MESSAGES.PROPERTY_IMAGES

































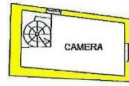




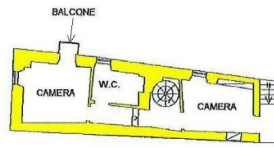




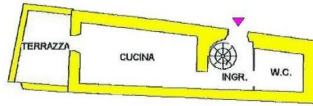




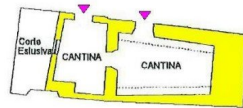
PIANO PRIMO



PIANO TERRA



PIANO PRIMO SEMINTERRATO



PIANO SECONDO SEMINTERRATO