



# LUNIGIANA 2000

real estate

**Ref. 169A**

---

# Two stone buildings



## BESCHREIBUNG

**Two stone buildings requiring renovation** with **courtyard and terrace** set just 9 km far from a motorway exit.

The property consist of :

A)

- courtyard and cellar on ground floor;
- kitchen, two bedrooms and terrace on first floor;
- attic area on second floor.

B)

- cellar, store room, hallway and wood shed on ground floor;

- terrace, cellar, store room and kitchen on first floor.

No central heating

The car can be parked approximately at 30 meters far from the house.

### **TECHNISCHE DETAILS**

Nutzfläche

100 m<sup>2</sup>

Lärmpegel

0 - zona molto silenziosa

Stockwerke

2

Zimmer

5

Schlafzimmer

2

Badezimmer

1

Innenhof

Ja

Keller

Ja

Terrasse

Ja

Höhe ü. d. M.

450

Energieklasse

195.77 Kw/h m<sup>2</sup>

Status

da ristrutturare

Heizung

Inesistente

### **Kategorie**

G

MESSAGES.PROPERTY\_IMAGES

























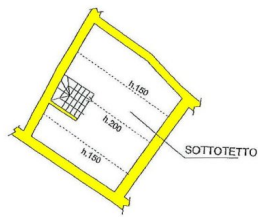




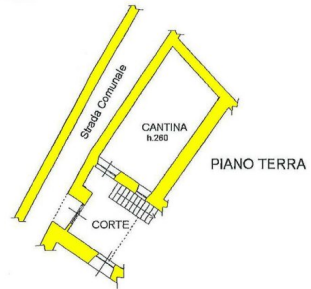
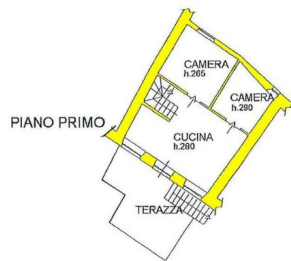


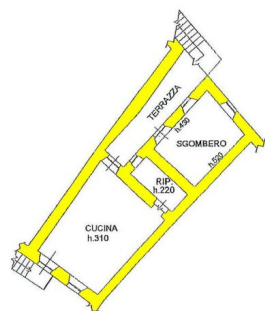




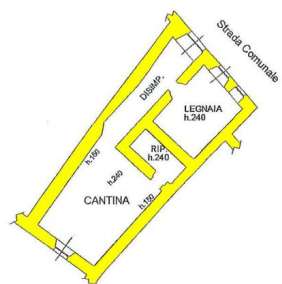


PIANO SECONDO





PIANO PRIMO



PIANO TERRA