



LUNIGIANA 2000

real estate

Ref. 118A

Detached house



BESCHREIBUNG

Detached house with flat **land** of 4.255 sq m set in a sunny position, easily to reach through an asphalt road and close to amenities.

The property, on two levels, comprises:

- Entrance hall, kitchen, pantry, living room, two double bedrooms and bathroom with shower on first floor;
- Three cellars, boiler room, wood shed, barn and storage on ground floor.

Central heating (natural gas).

The property includes a well to water the land.

You can reach the house by car.

TECHNISCHE DETAILS

Nutzfläche

215 m²

Außenfläche

300 m²

Lärmpegel

0 - zona molto silenziosa

Stockwerke

2

Zimmer

5

Schlafzimmer

2

Badezimmer

1

Garten

4255 m²

Grundstück

4255 m²

Innenhof

Ja

Keller

130 m²

Stellplatz

10 m²

Höhe ü. d. M.

185

Status

abitabile

Heizung

Autonomo a gas metano

Panoramablick

Ja

Blick auf den Apennin

Ja

Möbliert

Ja

Kategorie

G

MESSAGES.PROPERTY_IMAGES







































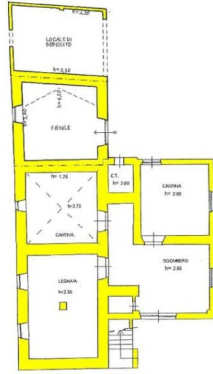




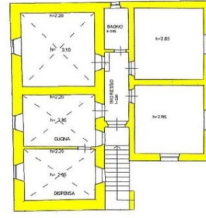








PIANO TERRA



PIANO PRIMO