



LUNIGIANA 2000

real estate

Ref. 150A

Typical stone house



BESCHREIBUNG

Stone village house with two terraces set in a charming square in the typical medieval borgo which was an ancient walled town of the XIV^o century.

The property consists of two units:

1)

- vaulted taverna on ground floor;
- terrace, entrance hall, kitchen, hallway, living room with original old fireplace, double bedroom and bathroom with bath on first floor accessible through an external staircase;

2)

- hall, kitchen, living room with fireplace, double bedroom with balcony and bathroom with

shower on second floor

Central heating (natural gas).

Fully furnished.

It is possible to reach the house by car.

TECHNISCHE DETAILS

Nutzfläche

120 m²

Außenfläche

180 m²

Lärmpegel

0 - zona molto silenziosa

Stockwerke

3

Zimmer

6

Schlafzimmer

2

Badezimmer

2

Keller

Ja

Terrasse

Ja

Balkon

Ja

Höhe ü. d. M.

170

Status

abitabile

Heizung

Autonomo a gas metano

Panoramablick

Ja

Möbliert

Ja

Kategorie

G

MESSAGES.PROPERTY_IMAGES





































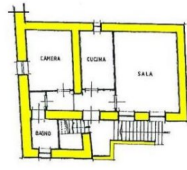




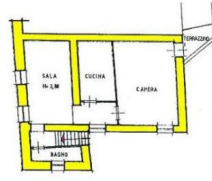




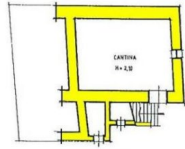




PIANO PRIMO



PIANO SECONDO



PIANO TERRA