



LUNIGIANA 2000

real estate

Ref. 029A

Village house



BESCHREIBUNG

Village house with garden, terrace and parking space set at 400 meters above sea level, at just 2.3 km. far from a charming medieval borgo with amenities.

The property consists of:

- bedroom with ensuite, hall, characteristic stone vaulted taverna, cellar and store room on ground floor;
- terrace, living room with open plan kitchen, double bedroom, single bedroom, hallway, bathroom with shower and terrace with amazing panoramic views over the valley.

Central heating (natural gas).

Fully furnished.

TECHNISCHE DETAILS

Nutzfläche

120 m²

Außenfläche

180 m²

Lärmpegel

0 - zona molto silenziosa

Stockwerke

2

Zimmer

5

Schlafzimmer

3

Badezimmer

2

Garten

650 m²

Grundstück

650 m²

Innenhof

6 m²

Keller

35 m²

Stellplatz

Ja

Terrasse

4 m²

Höhe ü. d. M.

410

Status

abitabile

Heizung

Autonomo a gas metano

Panoramablick

Ja

Möbliert

Ja

Kategorie

G

MESSAGES.PROPERTY_IMAGES





































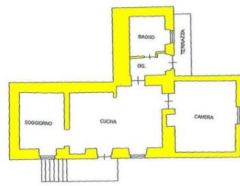




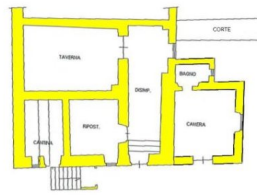








PIANO PRIMO



PIANO TERRA

