



LUNIGIANA 2000

real estate

Ref. 173A

Newly built villa



BESCHREIBUNG

Newly built villa with garden and photovoltaic system set in a residential area, just 3 kilometres far from a small town with amenities and railway station.

The villa is divided into two connected real estate units and is composed of:

- Entrance hall, equipped kitchen, large living room, hall, double bedroom, bathroom with shower, laundry room, store room, hallway, small cellar, toilet, store room and study on ground floor;
- Hallway, **terrace**, double bedroom with terrace, another double bedroom, closet room, bathroom with shower, hall, a further **terrace**, double bedroom with terrace and bathroom with shower on first floor.

Central heating (natural gas, heating pumps and air conditioning).

**Photovoltaic system and solar thermal system.
Alarm system.**

The villa is sold furnished.

Parking space in the private fenced courtyard.

TECHNISCHE DETAILS

Nutzfläche

200 m²

Außenfläche

245 m²

Lärmpegel

1 - zona silenziosa

Stockwerke

2

Zimmer

9

Schlafzimmer

5

Badezimmer

4

Garten

570 m²

Grundstück

570 m²

Innenhof

570 m²

Keller

7 m²

Stellplatz

4 m²

Terrasse

14 m²

Balkon

8 m²

Vorbau

4 m²

Höhe ü. d. M.

180

Status

nuovo

Heizung

Autonomo a gas metano

Panoramablick

Ja

Blick auf den Apennin

Ja

Möbliert

Ja

Kategorie

E

MESSAGES.PROPERTY_IMAGES









































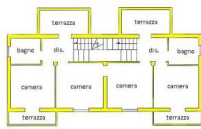




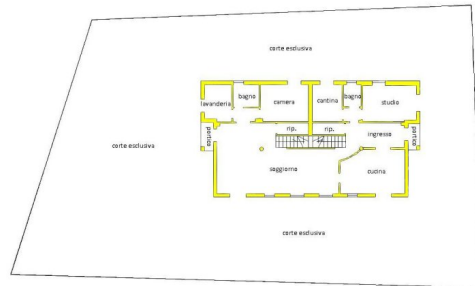








PIANTA PIANO PRIMO
162,75 mt



PIANTA PIANO TERRA
112,70 mt