



LUNIGIANA 2000

real estate

Ref. 269A

Semi-detached house



BESCHREIBUNG

Semi-detached house with large terrace, courtyard and garden situated just 6 km. far from a town with amenities, train station and motorway exit.

Its present accommodation presents:

- cellar, boiler room, vaulted underpass, two cellars, toilet and courtyard on ground floor;
- large terrace with bathroom-laundry room on it, entrance hall, kitchen, store room, double bedroom, single bedroom and bathroom with shower on first floor.

Central heating (oil).

There is to possibility of connecting to the village's propane network.

The car can be parked in the piazza in front of the house.

TECHNISCHE DETAILS

Nutzfläche

60 m²

Außenfläche

80 m²

Lärmpegel

0 - zona molto silenziosa

Stockwerke

2

Zimmer

4

Schlafzimmer

2

Badezimmer

3

Garten

Ja

Grundstück

Ja

Innenhof

Ja

Keller

Ja

Terrasse

Ja

Höhe ü. d. M.

190

Status

abitabile

Heizung

Autonomo a gasolio

Panoramablick

Ja

Möbliert

Ja

Kategorie

G

MESSAGES.PROPERTY_IMAGES

























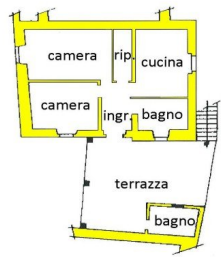




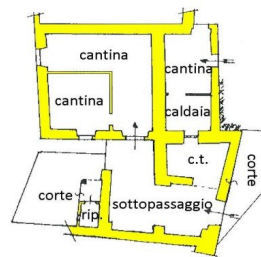








piano primo



piano terra