



# LUNIGIANA 2000

real estate

**Ref. 278B**

---

# Original stone farmhouse



## BESCHREIBUNG

Original **stone farmhouse requiring renovation** with **two tool sheds** and with **9.5 hectares of partially scattered land** set in an hillside position, at 380 meters above sea level, with fabulous views over the valley.

The property, on three levels, consists of :

- entrance hall, living room with fireplace and open plan kitchen opening onto a large panoramic **covered terrace**, hallway, two bedrooms, bathroom with bath and outside store room (former chestnut drying room) on ground floor;
- **terrace**, small room and large attic area where it is possible to build two living spaces on first floor;
- **portico**, cellar and stable on lower ground floor.

## **Central heating (propane gas).**

Access to the property through 1, 5 km of dirt road.

### **TECHNISCHE DETAILS**

Nutzfläche

280 m<sup>2</sup>

Außenfläche

350 m<sup>2</sup>

Lärmpegel

0 - zona molto silenziosa

Stockwerke

3

Zimmer

3

Schlafzimmer

2

Badezimmer

1

Garten

Ja

Grundstück

95350 m<sup>2</sup>

Innenhof

Ja

Keller

185 m<sup>2</sup>

Garage

36 m<sup>2</sup>

Stellplatz

Ja

Terrasse

Ja

Höhe ü. d. M.

380

Status

da ristrutturare

Heizung

Autonomo a gas propano

Panoramablick

Ja

# Kategorie

G

MESSAGES.PROPERTY\_IMAGES































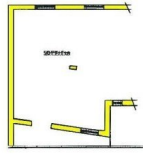




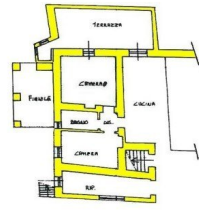




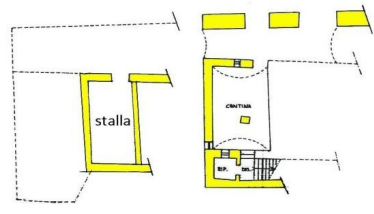




piano primo



piano terra



piano seminterrato

