



# LUNIGIANA 2000

real estate

**Ref. 281**

---

# Stone building requiring restoration



## BESCHREIBUNG

**Stone building** (60 sq m) **requiring renovaton** with adjacent **land** of 2.540 sq m with amazing panoramic views over the valley set in a very sunny and hillside position at 485 meters above sea level.

The property that can be reached throuhg a dirt road of approximately 600 meters, will be sold including an approved project with the changed of use.

The project involves:

- living room with open plan kitchne on ground floor;
- double bedroom, bathroom with shower and terrace on first floor.

There is a restaurant and a bar at about 600 meters far.

## **TECHNISCHE DETAILS**

Nutzfläche

40 m<sup>2</sup>

Außenfläche

60 m<sup>2</sup>

Lärmpegel

0 - zona molto silenziosa

Stockwerke

2

Zimmer

2

Schlafzimmer

1

Badezimmer

1

Grundstück

2540 m<sup>2</sup>

Stellplatz

10 m<sup>2</sup>

Terrasse

6 m<sup>2</sup>

Höhe ü. d. M.

485

Status

da ristrutturare

Heizung

Inesistente

Panoramablick

Ja

## **Kategorie**

Esente

MESSAGES.PROPERTY\_IMAGES

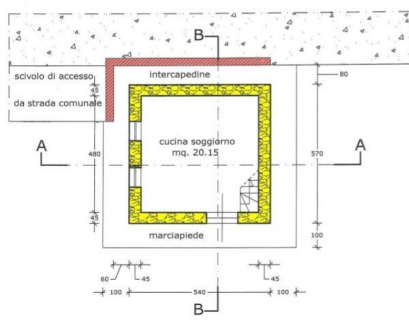




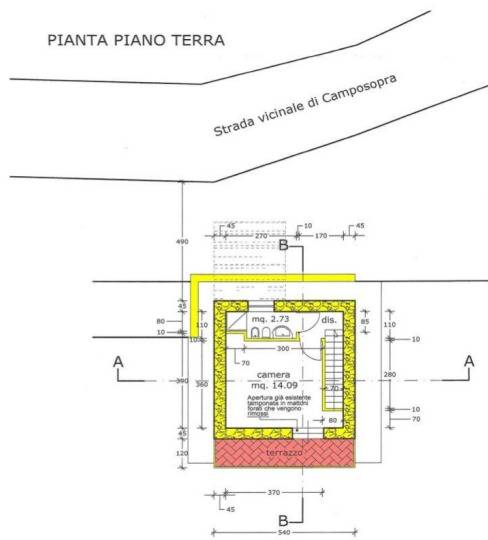


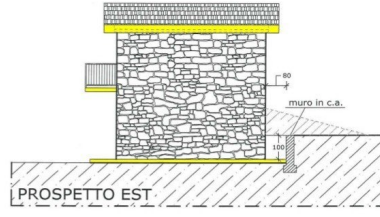
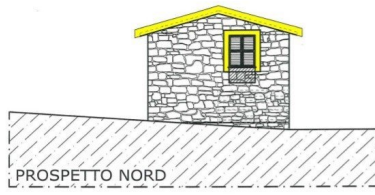


PIANTA PIANO SEMINTERRATO

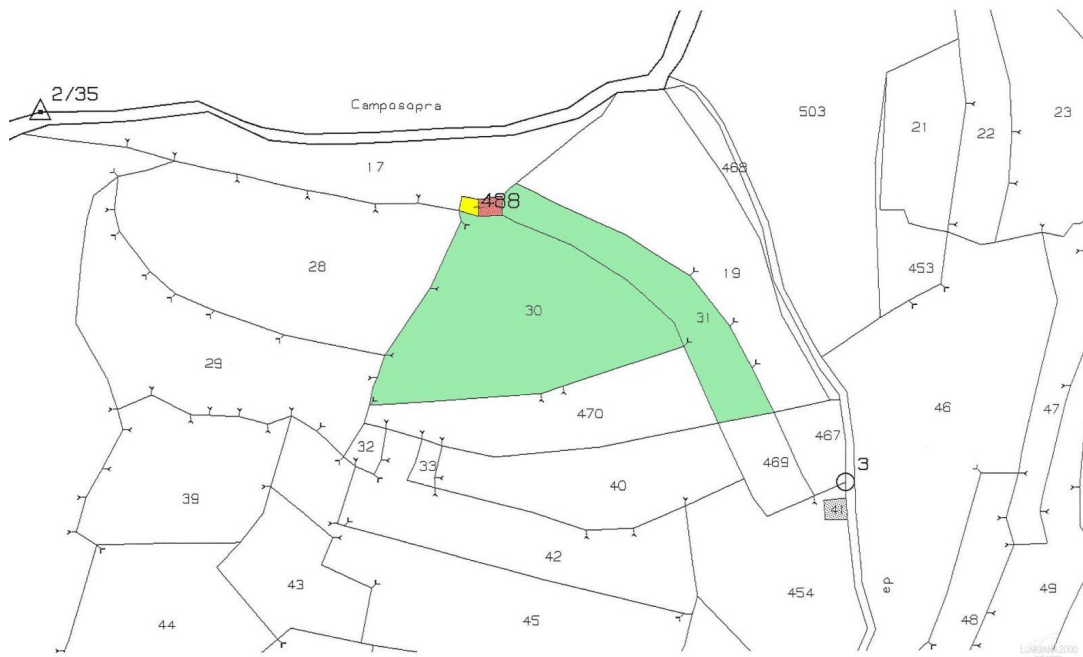


PIANTA PIANO TERRA





LIMESANA 2000  
relazioni



LIMESANA 2000  
relazioni