



LUNIGIANA 2000

real estate

Ref. 308

Portion of family house



BESCHREIBUNG

Portion of family house on first floor with **courtyard, cellar and a small garden** set in a village where there is a bar, a bakery and the train station.

The property consists of:

- Cellar on ground floor;
- **Terrace, veranda**, entrance hall, living room with fireplace, kitchen with terrace, three double bedrooms, bathroom with shower and partially veranded terrace on first floor.

Central heating (natural gas).

Fully furnished.

Possibility to include a flat vegetable garden of 1.857 sq m which is at approximately 70 metres far

from the house.

TECHNISCHE DETAILS

Nutzfläche

100 m²

Außenfläche

130 m²

Lärmpegel

2 - zona abbastanza silenziosa

Wasserquelle

Fiume/Torrente

Stockwerke

1

Zimmer

5

Schlafzimmer

3

Badezimmer

1

Grundstück

1857 m²

Innenhof

120 m²

Keller

13 m²

Stellplatz

2 m²

Terrasse

13 m²

Balkon

10 m²

Höhe ü. d. M.

150

Status

abitabile

Heizung

Autonomo a gas metano

Panoramablick

Ja

Möbliert

Ja

Kategorie

G

MESSAGES.PROPERTY_IMAGES































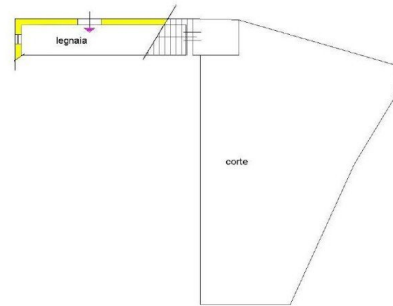








PIANO PRIMO



PIANO TERRA

LUNEGANA 2000
PROGETTO

