



LUNIGIANA 2000

real estate

Ref. 052L

Village house



BESCHREIBUNG

Village house on three levels set in a borgo with bars, grocery shops, restaurant and train station.

The property comprises:

- cellar and bathroom on ground floor;
- living room and kitchen on first floor;
- two bedrooms on second floor.

Central heating (village network propane tank)

You can park the car at the public parking which is approximately 50 meters far from the house.

TECHNISCHE DETAILS

Nutzfläche
70 m²
Außenfläche
83 m²
Lärmpegel
0 - zona molto silenziosa
Stockwerke
3
Zimmer
4
Schlafzimmer
2
Badezimmer
1
Keller
6 m²
Höhe ü. d. M.
550
Status
da ristrutturare
Heizung
Stufa a Legna

Kategorie

G

MESSAGES.PROPERTY_IMAGES





























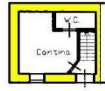




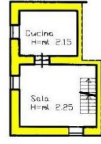








PIANO TERRA



PIANO PRIMO



PIANO SECONDO