



LUNIGIANA 2000

real estate

Ref. 314

Detached house requiring renovation



BESCHREIBUNG

Detached house to be restored with **two tool sheds** and with **90.271 sq m of partially scattered land**, which is set in an hillside position, at 380 meters above sea level, with amazing views all over the valley.

Its present accomodation offers:

- entrance hall, kitchen, living room openint onto a large **covered terrace**, hall, double bedroom, store room and bathroom with bath on first floor;
- **courtyard**, two store rooms, garage and two rooms used as stable on ground floor.

Central heating (natural gas).

TECHNISCHE DETAILS

Nutzfläche
180 m²
Außenfläche
220 m²
Lärmpegel
0 - zona molto silenziosa
Stockwerke
2
Zimmer
3
Schlafzimmer
2
Badezimmer
1
Grundstück
Ja
Keller
Ja
Garage
Ja
Terrasse
Ja
Höhe ü. d. M.
380
Energieklasse
400.52 Kw/h m²
Status
da ristrutturare
Heizung
Autonomo a gas metano
Panoramablick
Ja
Möbliert
Ja

Kategorie

G

MESSAGES.PROPERTY_IMAGES

























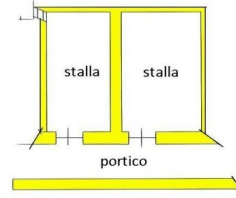
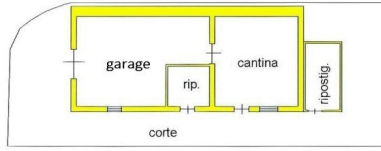
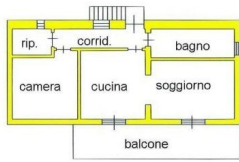












LUMENNA 2000
 nel 2000

