



LUNIGIANA 2000

real estate

Ref. 334

Restored stone farmhouse with 14 hectares of land



BESCHREIBUNG

Superbly **restored unique historic stone property** (900 sq m) surrounded by 14 hectares of **land**, situated in commanding position with amazing views.

The property consists of :

A) Large farmhouse comprising 3 flats, porch and 6 cellars

- **1.** entrance hall, dining room with open plan kitchen, living room, three bedrooms, kitchen, laundry room and three bathrooms
- **2.** dining room with open plan kitchen, sitting room, study, sitting area, two bedrooms and bathroom

- **3.** entrance hall, living room with open plan kitchen, bedroom and bathroom

B) barn /stable on two floors

C) outbuilding with oven and stone flagged **courtyard**

TECHNISCHE DETAILS

Nutzfläche

700 m²

Außenfläche

900 m²

Lärmpegel

0 - zona molto silenziosa

Stockwerke

3

Zimmer

14

Schlafzimmer

6

Badezimmer

5

Garten

145000 m²

Grundstück

145000 m²

Keller

6 m²

Stellplatz

5 m²

Höhe ü. d. M.

400

Status

ristrutturato

Heizung

Autonomo a gas propano

Panoramablick

Ja

Kategorie

G

MESSAGES.PROPERTY_IMAGES













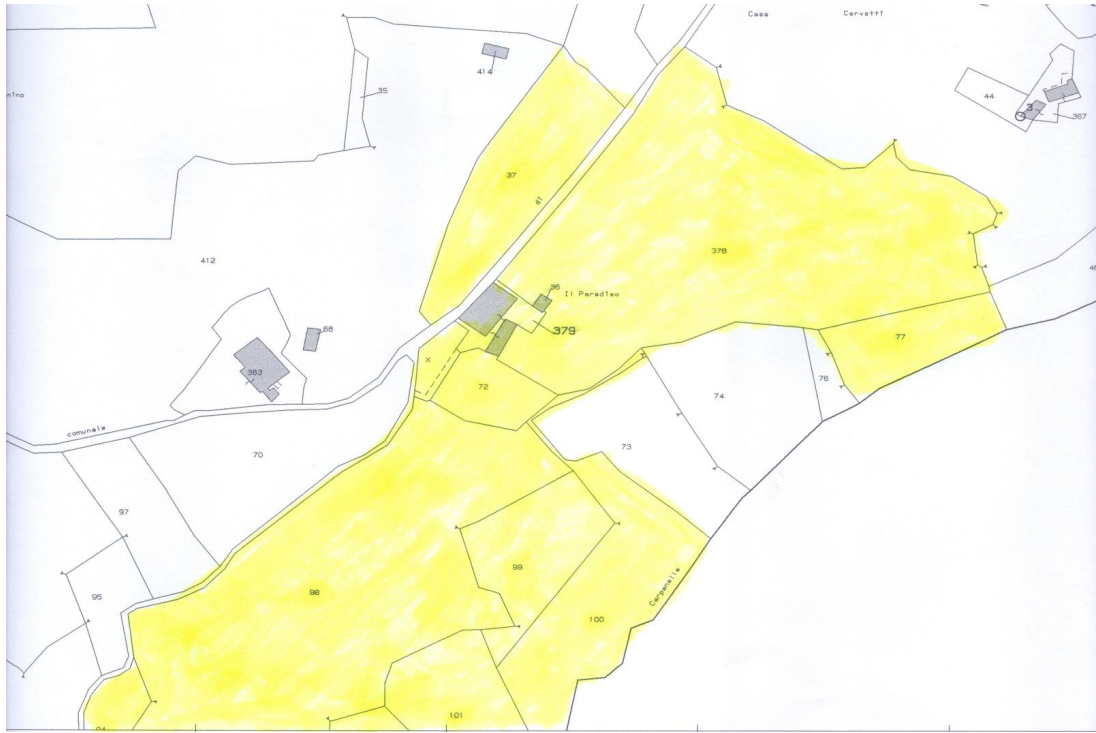




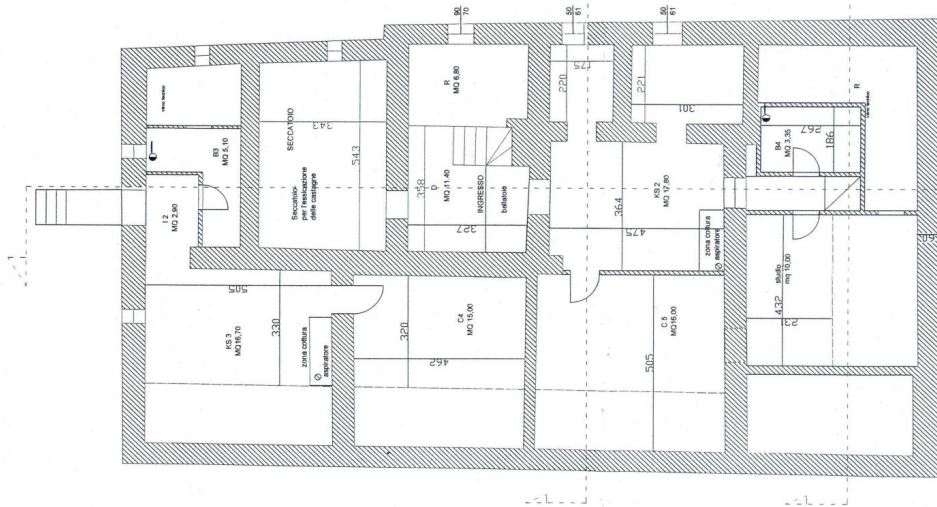




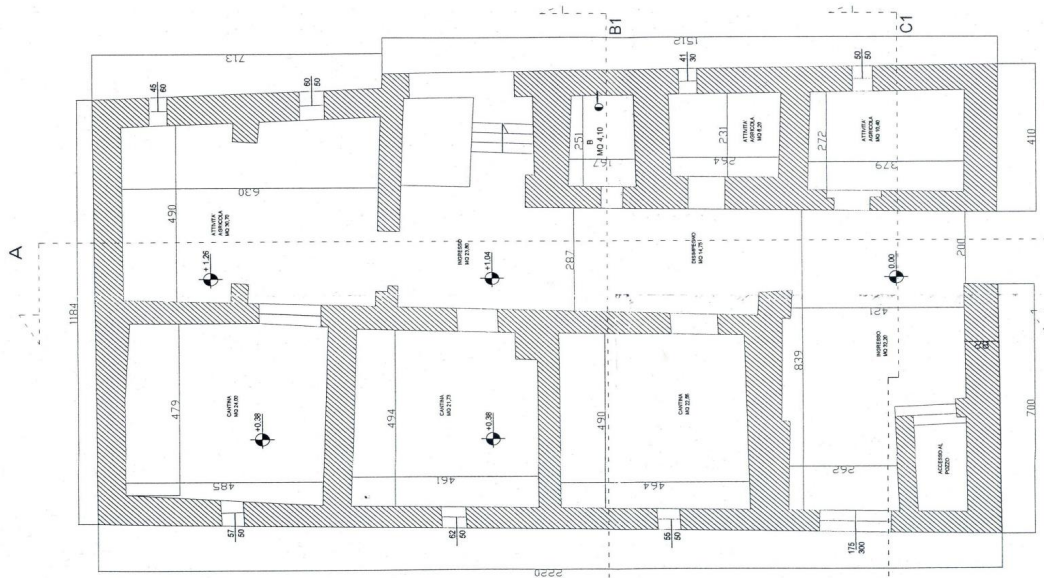
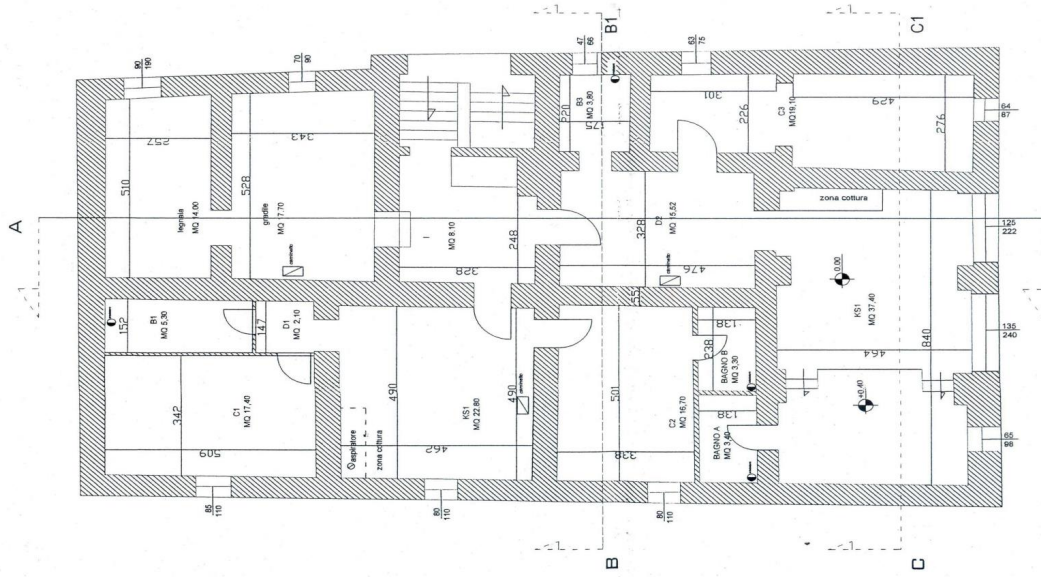




PIANTA SOTTOTETTO



PIANTA PIANO PRIMO



PIANTA PIANO TERRA - CANTINE