



# LUNIGIANA 2000

real estate

**Ref. 842**

# Old original stone mill



## BESCHREIBUNG

**Old original stone mill** (315 sq m) with **stone barn** (35 sq m) and 4.262 sq m of **land** situated just 300 m. above sea level, in a pleasant, sunny and private location , surrounded by woodland and meadows and bordering with a picturesque stream.

The property consists of:

- entrance hall, taverna , kitchen, store room and stairwell on ground floor;
- hallway, three bedrooms all of them with terraces, bathroom and staircase leading to the attic area on first floor (right wing);
- dining room, living room with **terrace**, kitchen (which can be accessed by external staircase) and bathroom on first floor (left wing).

The old mill has two arched niches where once the water was running the horizontal wheel on lower

ground floor and entrance hall, store room and two rooms for the millstones which are still there on first floor.

**The property includes a 6 kW photovoltaic system.**

**Central heating (propane gas and pellet stove).**

#### **TECHNISCHE DETAILS**

Nutzfläche

260 m<sup>2</sup>

Außenfläche

350 m<sup>2</sup>

Lärmpegel

0 - zona molto silenziosa

Wasserquelle

Fiume/Torrente

Stockwerke

3

Zimmer

14

Schlafzimmer

3

Badezimmer

2

Garten

4000 m<sup>2</sup>

Grundstück

4000 m<sup>2</sup>

Keller

Ja

Stellplatz

5 m<sup>2</sup>

Terrasse

Ja

Balkon

Ja

Höhe ü. d. M.

285

Energieklasse

273.63 Kw/h m<sup>2</sup>

Status

abitabile

Heizung

Autonomo a gas propano

Panoramablick

Ja  
Möbliert  
Ja

## **Kategorie**

G

MESSAGES.PROPERTY\_IMAGES

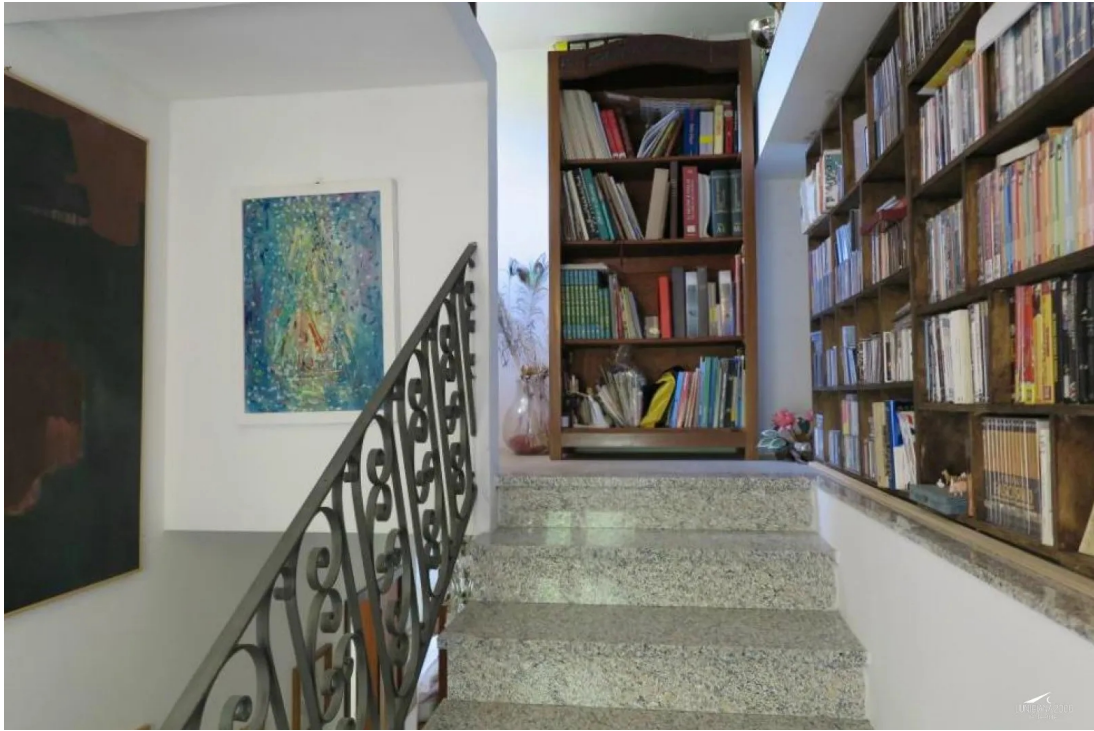














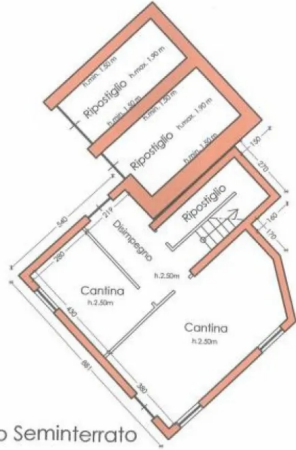




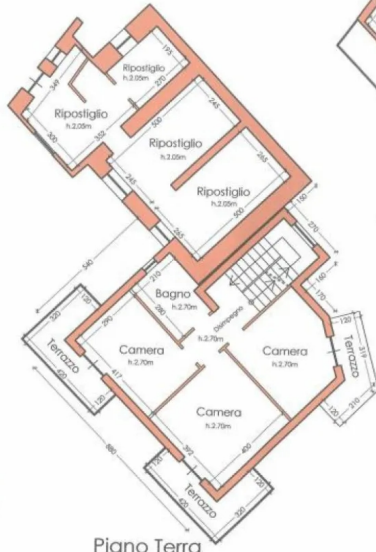




Piano Seminterrato



Piano Terra



Piano Primo

