



# LUNIGIANA 2000

real estate

**Ref. 453**

# Typical stone house



## BESCHREIBUNG

**Typical stone house** (124 sq m) set in a charming medieval borgo with shops, bar, grocery shop and greengrocer.

The property comprises:

- entrance hall, small taverna, bathroom with shower and cellar-laundry room on ground floor;
- entrance with **terrace**, living room with wood burning stove and kitchen on first floor;
- two double bedrooms and bathroom with shower on second floor.

**Central heating (village gas connection).**

## TECHNISCHE DETAILS

Nutzfläche

124 m<sup>2</sup>  
Außenfläche  
150 m<sup>2</sup>  
Lärmpegel  
1 - zona silenziosa  
Stockwerke  
3  
Zimmer  
5  
Schlafzimmer  
2  
Badezimmer  
2  
Keller  
Ja  
Terrasse  
Ja  
Höhe ü. d. M.  
240  
Energieklasse  
182.04 Kw/h m<sup>2</sup>  
Status  
ristrutturato  
Heizung  
Autonomo a gas metano  
Panoramablick  
Ja  
Möbliert  
Ja

## **Kategorie**

G

MESSAGES.PROPERTY\_IMAGES







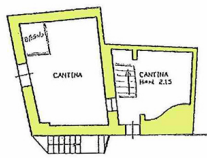




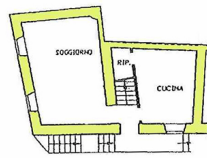








PIANO TERRA



PIANO SECONDO