



LUNIGIANA 2000

real estate

Ref. 800

Restored semi-detached house



BESCHREIBUNG

Restored semi-detached house (160 sq m) set in a charming medieval hamlet with bar, restaurant, shops and a small supermarket and with amazing panoramic views over the valley, just 12 km. far from sea.

The property comprises:

- two vaulted cellars on lower ground floor;
- **courtyard**, entrance hall, kitchen, hall, bedroom and bathroom with shower on ground floor;
- small terrace, living room, store room, kitchen with fireplace, sitting room, double bedroom and bathroom with shower on upper level.

Central heating (natural gas).

TECHNISCHE DETAILS

Nutzfläche

160 m²

Außenfläche

220 m²

Lärmpegel

0 - zona molto silenziosa

Stockwerke

3

Zimmer

7

Schlafzimmer

2

Badezimmer

2

Keller

Ja

Höhe ü. d. M.

130

Energieklasse

345.89 Kw/h m²

Status

ristrutturato

Heizung

Autonomo a gas metano

Panoramablick

Ja

Möbliert

Ja

Kategorie

G

MESSAGES.PROPERTY_IMAGES

















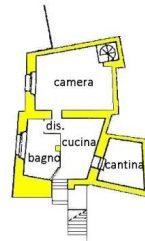




PIANO PRIMO SOTTOSTRADA



piano rialzato



piano terra