



LUNIGIANA 2000

real estate

Ref. 695

Detached house



BESCHREIBUNG

Detached house on two levels with **fenced garden of 889 sq m** situated close to facilities such as bank, post office, railway station and bordering a lovely stream.

The property comprises:

- entrance hall, kitchen, cellar and garden with barbecue on ground floor;
- living room opening onto a **stone flagged courtyard**, double bedroom and bathroom on first floor;
- attic area with double bedroom on second floor.

Car parking.

Central heating (LPG).

TECHNISCHE DETAILS

Nutzfläche

80 m²

Außenfläche

105 m²

Lärmpegel

0 - zona molto silenziosa

Stockwerke

2

Zimmer

6

Schlafzimmer

2

Badezimmer

1

Garten

700 m²

Grundstück

700 m²

Innenhof

Ja

Keller

Ja

Stellplatz

2 m²

Terrasse

Ja

Balkon

Ja

Höhe ü. d. M.

230

Status

abitabile

Heizung

Autonomo a gas propano

Möbliert

Ja

Kategorie

G

MESSAGES.PROPERTY_IMAGES















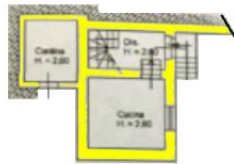




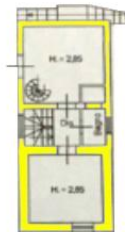








PIANO SEMINTERRATO



PIANO TERRA



PIANO SOTTOTETTO