



LUNIGIANA 2000

real estate

Ref. 700

Detached villa



BESCHREIBUNG

Detached villa with over 11.000 sq m of **land**, immersed in the green of the surrounding countryside, close to a lovely stream and just 7 km far from the motorway exit.

The property, which is in very good condition, comprises:

- large portico, entrance hall, living room with dining area, kitchen, pantry, hall, bedroom with ensuite, two single bedrooms and bathroom on ground floor;
- portico, large living room with open plan kitchen, hall, two bedrooms, bathroom and terrace on first floor;
- spacious living area, hall, double bedroom, bathroom and store room on attic floor.

Oven and barbecue outside.

Possibility to build a swimming pool.

TECHNISCHE DETAILS

Nutzfläche

330 m²

Außenfläche

380 m²

Stockwerke

2

Zimmer

11

Schlafzimmer

6

Badezimmer

4

Grundstück

11252 m²

Stellplatz

Ja

Terrasse

Ja

Vorbau

Ja

Höhe ü. d. M.

160

Status

ristrutturato

Heizung

Autonomo a gas propano

Panoramablick

Ja

Möbliert

Ja

Kategorie

G

MESSAGES.PROPERTY_IMAGES







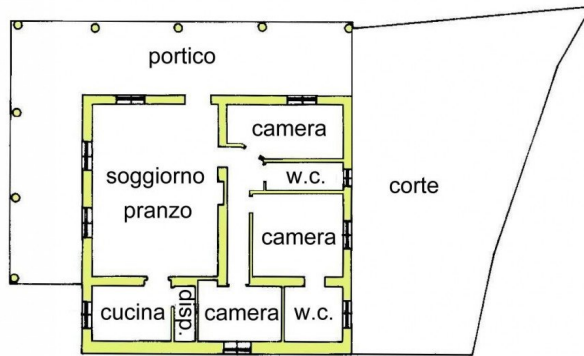




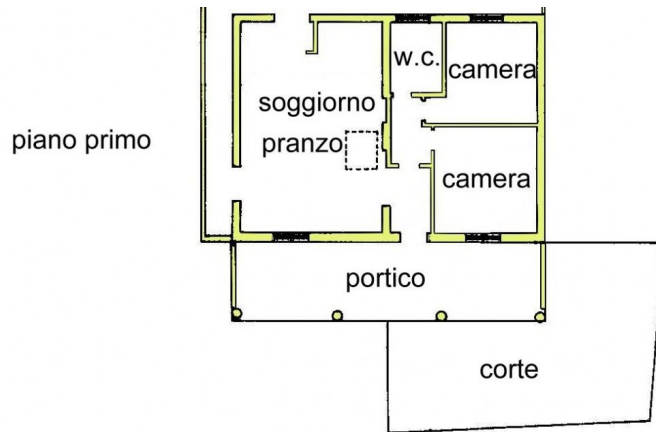




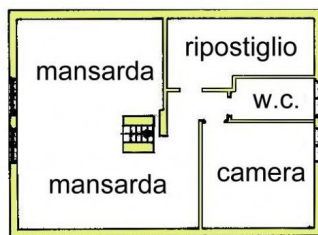




piano terra



piano secondo



bagno

