



# LUNIGIANA 2000

real estate

**Ref. 107**

---

# Typical stone house with terraces and breathtaking views



## BESCHREIBUNG

**Typical stone house** with **two beautiful terraces**, set at 400 m. above sea level, with breathtaking panoramic views over the surrounding green hills and the Magra valley, on the edge of a pretty medieval village.

The property consists of:

- terrace, kitchen with fireplace, living room with wood burning stove, double bedroom and bathroom on ground floor;
- large double bedrooms, attic room and large panoramic terrace on first floor;
- entrance hall, double bedroom with vaulted ceiling and three cellars on lower ground floor.

## Central heating with wood burning stoves and electric radiators.

### TECHNISCHE DETAILS

Nutzfläche

120 m<sup>2</sup>

Außenfläche

150 m<sup>2</sup>

Lärmpegel

0 - zona molto silenziosa

Stockwerke

3

Zimmer

8

Schlafzimmer

3

Badezimmer

1

Keller

65 m<sup>2</sup>

Terrasse

24 m<sup>2</sup>

Höhe ü. d. M.

400

Status

abitabile

Heizung

Inesistente

Panoramablick

Ja

Möbliert

Ja

## Kategorie

G

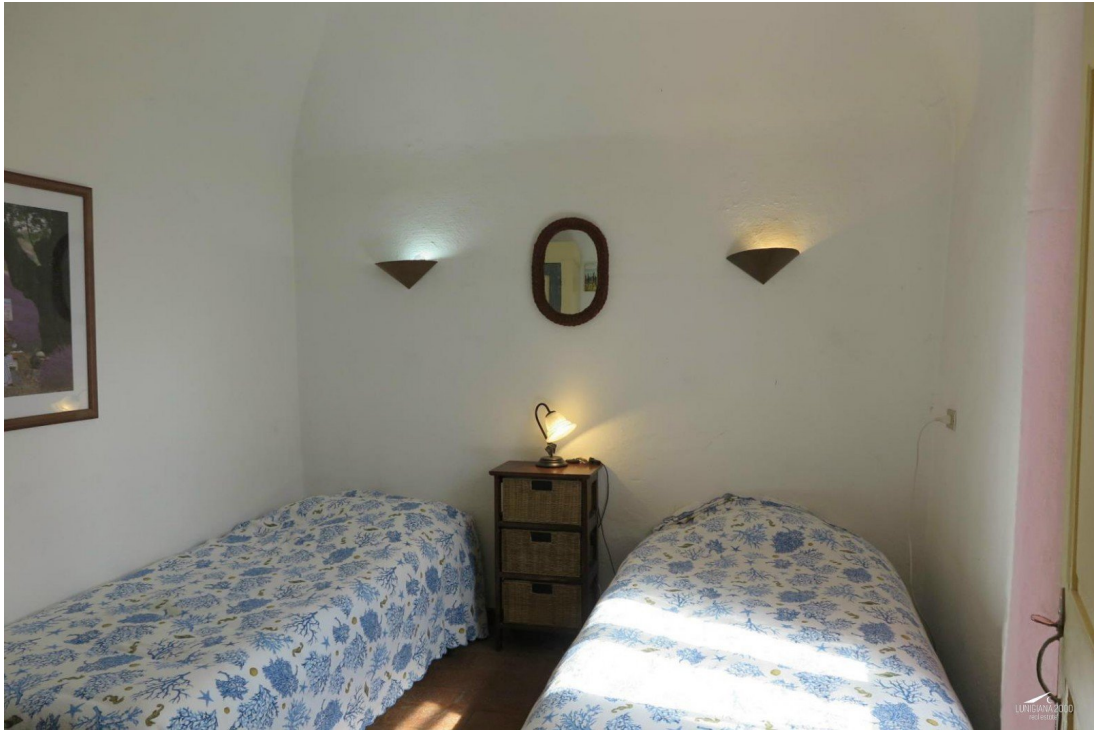
MESSAGES.PROPERTY\_IMAGES

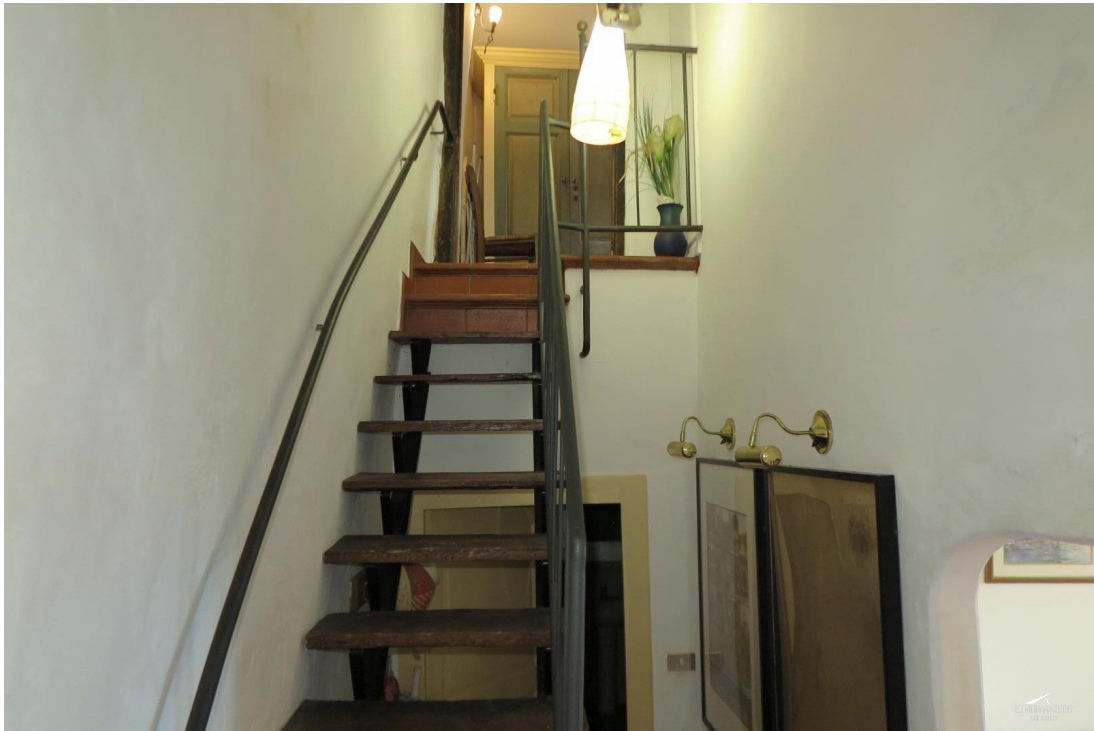


























PIANO INTERRATO 1S



PIANO TERRA



PIANO PRIMO



PIANO SECONDO