



# LUNIGIANA 2000

real estate

**Ref. 132A**

---

# Semi-detached stone house with garden



## BESCHREIBUNG

**Stone house**, free on three sides, with **garden** of 156 sq m and beautiful panoramic views over the valley situated in a small hillside village, just 3 km far from the famous caves of Equi Terme, known since ancient times for its beneficial sulphurous waters

The house consists of:

- entrance hall, kitchen, living room with fireplace, dining room on ground floor;
- hallway, three double bedrooms and bathroom with shower on first floor;
- four cellars in the basement.

**Central heating (propane gas)**

## TECHNISCHE DETAILS

Nutzfläche

140 m<sup>2</sup>  
Außenfläche  
210 m<sup>2</sup>  
Lärmpegel  
1 - zona silenziosa  
Stockwerke  
3  
Zimmer  
10  
Schlafzimmer  
3  
Badezimmer  
1  
Garten  
156 m<sup>2</sup>  
Grundstück  
156 m<sup>2</sup>  
Keller  
Ja  
Höhe ü. d. M.  
335  
Status  
abitabile  
Heizung  
Autonomo a gas propano  
Panoramablick  
Ja  
Möbliert  
Ja

## **Kategorie**

G

MESSAGES.PROPERTY\_IMAGES





























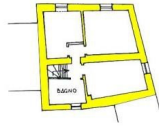




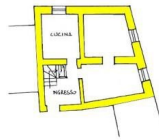




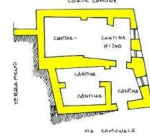
PIANO PRIMO



PIANO TERRA



PIANO SEMINTERRATO



LUMINARIA 2000  
1998/2000

