



# LUNIGIANA 2000

## real estate

**Ref. 583A**



LUNIGIANA2000  
real estate

**Lunigiana2000 - Real Estate in Tuscany**

**Italy, 54021 Bagnone (MS) - Piazza Roma, 2 - Ph. +39 0187421400 | Mob. +39 3355383266**

**[www.lunigiana2000.com](http://www.lunigiana2000.com) - [english.info@lunigiana2000.com](mailto:english.info@lunigiana2000.com)**

## Restored stone house



### DESCRIPTION

Recently **restored stone house** set close to amenities and 3 kilometres far from the motorway exit.

The property, on two levels, consists of:

- Entrance hall, living room with open plan kitchen and stairwell on ground floor;
- Hall, two bedrooms and bathroom with shower on first floor reachable by both internal and external staircase.

**Central heating (natural gas)**

**Fully furnished.**

## **TECHNICAL DETAILS**

Internal surface

55 sqm

External surface

85 sqm

Noise Level

0 - very silent area

Water Source

River/Stream

Floors

2

Rooms

4

Bedrooms

2

Bathrooms

1

Altitude a.s.l.

75

Energy class

339.88 Kw/h sqm

Status

Restored

Heating

Caldaia a pellet

Furnished

Yes

## **Category**

G



**Lunigiana2000 - Real Estate in Tuscany**

**Italy, 54021 Bagnone (MS) - Piazza Roma, 2 - Ph. +39 0187421400 | Mob. +39 3355383266**

**[www.lunigiana2000.com](http://www.lunigiana2000.com) - [english.info@lunigiana2000.com](mailto:english.info@lunigiana2000.com)**

MESSAGES.PROPERTY\_IMAGES







  
**LUNIGIANA2000**  
real estate

**Lunigiana2000 - Real Estate in Tuscany**

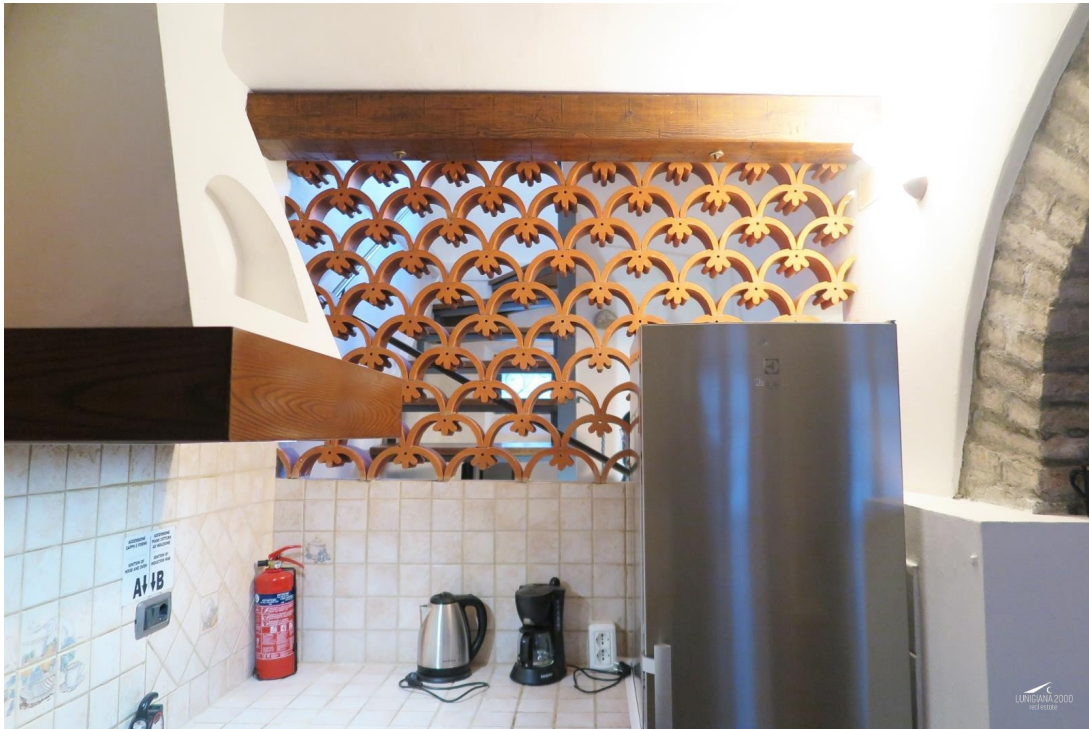
**Italy, 54021 Bagnone (MS) - Piazza Roma, 2 - Ph. +39 0187421400 | Mob. +39 3355383266**  
**[www.lunigiana2000.com](http://www.lunigiana2000.com) - [english.info@lunigiana2000.com](mailto:english.info@lunigiana2000.com)**







**Lunigiana2000 - Real Estate in Tuscany**  
**Italy, 54021 Bagnone (MS) - Piazza Roma, 2 - Ph. +39 0187421400 | Mob. +39 3355383266**  
**[www.lunigiana2000.com](http://www.lunigiana2000.com) - [english.info@lunigiana2000.com](mailto:english.info@lunigiana2000.com)**







  
**LUNIGIANA2000**  
real estate

**Lunigiana2000 - Real Estate in Tuscany**

**Italy, 54021 Bagnone (MS) - Piazza Roma, 2 - Ph. +39 0187421400 | Mob. +39 3355383266**  
**[www.lunigiana2000.com](http://www.lunigiana2000.com) - [english.info@lunigiana2000.com](mailto:english.info@lunigiana2000.com)**









**Lunigiana2000 - Real Estate in Tuscany**  
**Italy, 54021 Bagnone (MS) - Piazza Roma, 2 - Ph. +39 0187421400 | Mob. +39 3355383266**  
**[www.lunigiana2000.com](http://www.lunigiana2000.com) - [english.info@lunigiana2000.com](mailto:english.info@lunigiana2000.com)**



**Lunigiana2000 - Real Estate in Tuscany**  
**Italy, 54021 Bagnone (MS) - Piazza Roma, 2 - Ph. +39 0187421400 | Mob. +39 3355383266**  
**[www.lunigiana2000.com](http://www.lunigiana2000.com) - [english.info@lunigiana2000.com](mailto:english.info@lunigiana2000.com)**

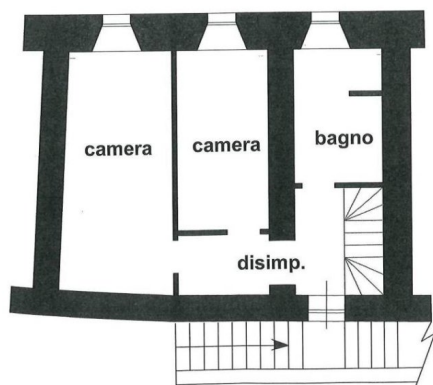




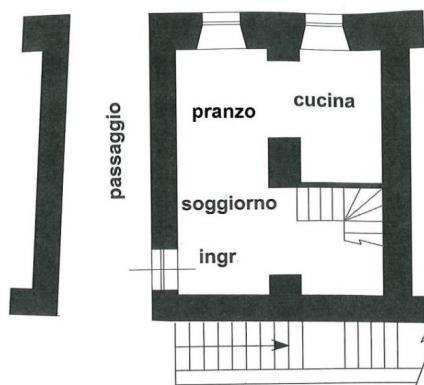
  
**LUNIGIANA2000**  
real estate

**Lunigiana2000 - Real Estate in Tuscany**

**Italy, 54021 Bagnone (MS) - Piazza Roma, 2 - Ph. +39 0187421400 | Mob. +39 3355383266**  
**[www.lunigiana2000.com](http://www.lunigiana2000.com) - [english.info@lunigiana2000.com](mailto:english.info@lunigiana2000.com)**



PIANO PRIMO



PIANO TERRA