



LUNIGIANA 2000

real estate

Réf. 358

Restored village house



DESCRIPTION

Charming **village house** with **terrace** set in a small hillside borgo, approximately at 400 metres above sea level.

The property, which has been recently **restored**, comprises:

- fully furnished living room-kitchen, bathroom and laundry room-pantry on ground floor;
- hall, two bathrooms and terrace on first floor.

Central heating (village gas network).

Partially furnished.

DÉTAILS TECHNIQUES

Surface habitable

60 m²

Surface extérieure

86 m²

Étages

2

Pièces

5

Chambres

2

Salles de bain

1

Terrasse

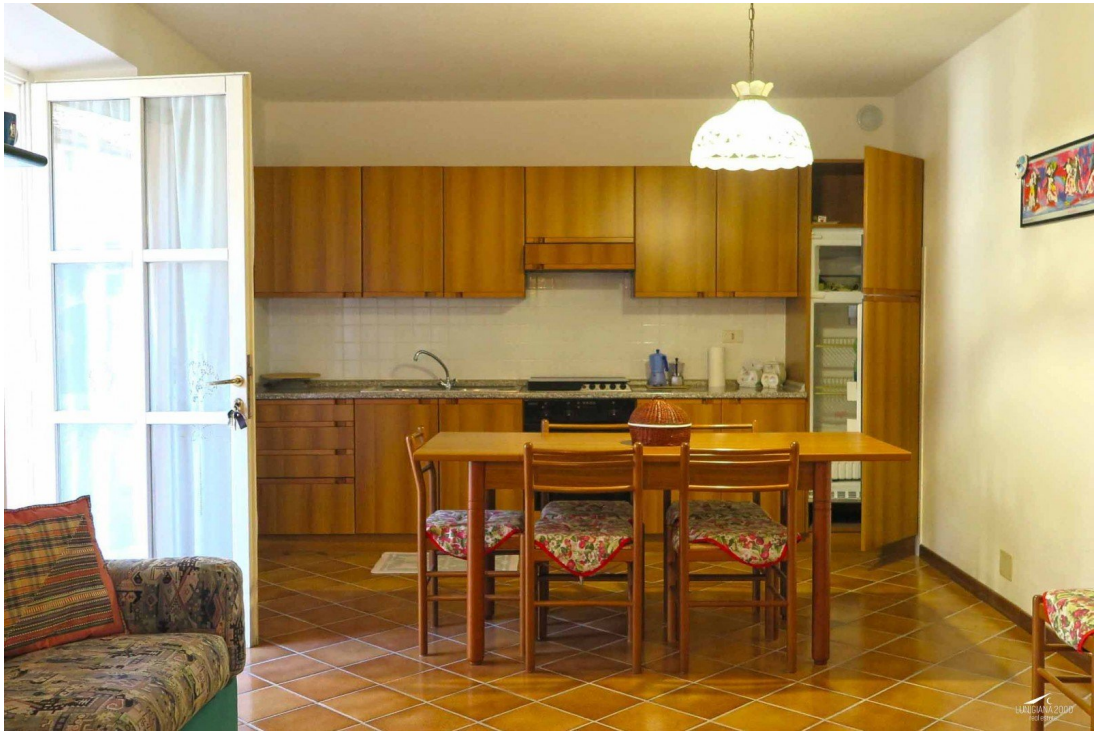
Oui

État

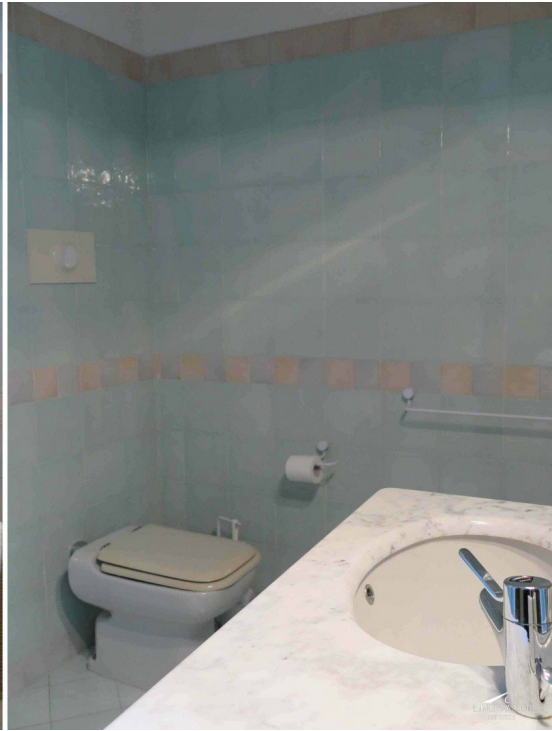
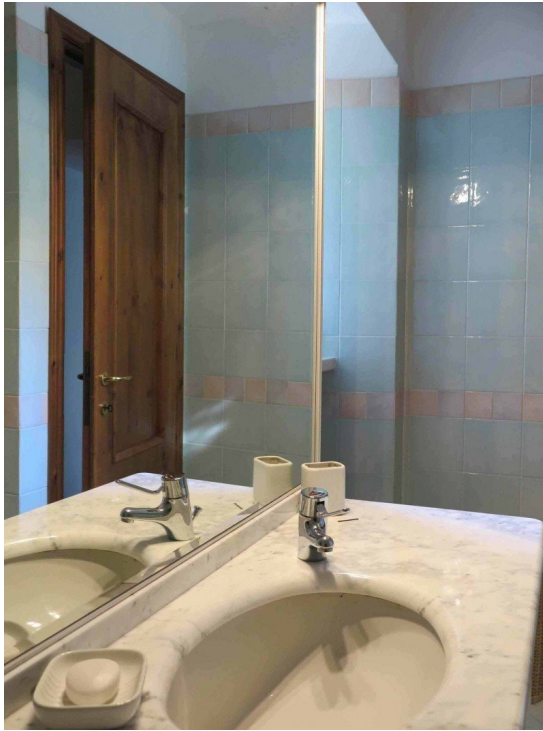
ristrutturato

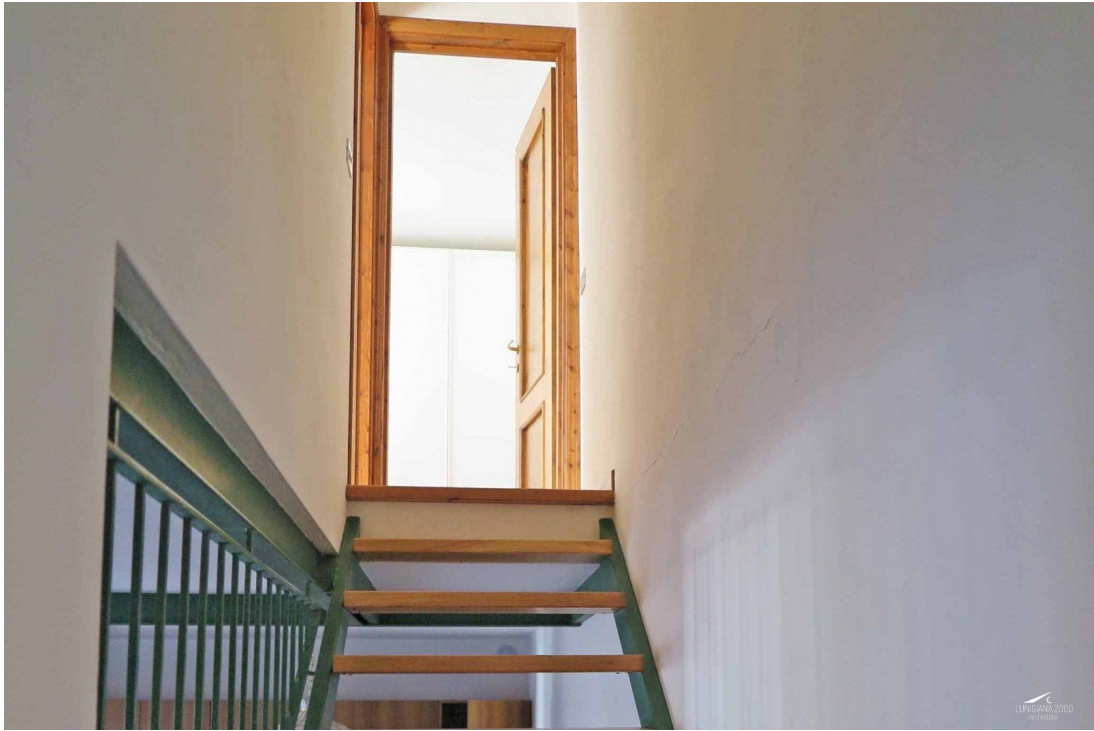
MESSAGES.PROPERTY_IMAGES

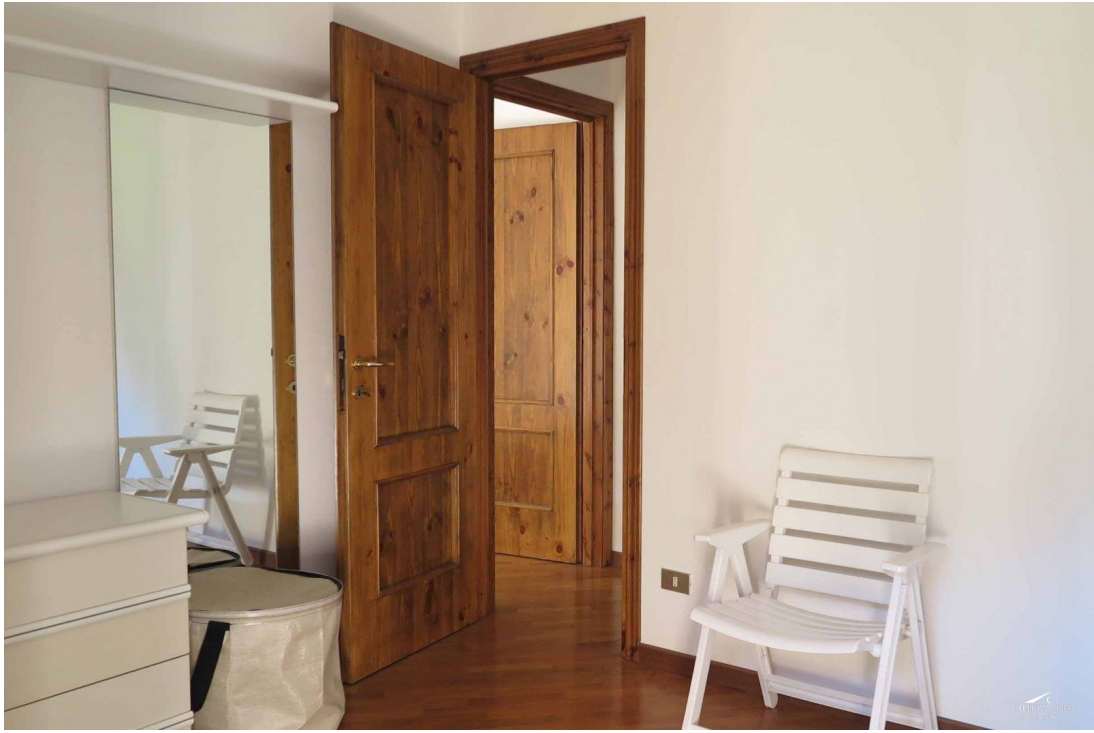






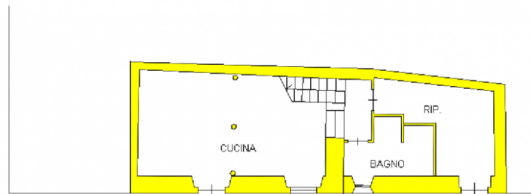








PIANTA PIANO TERRA



PIANTA PIANO PRIMO

