



# LUNIGIANA 2000

real estate

**Réf. 007A**

---

# Semi-detached house



## DESCRIPTION

**Semi-detached house** on three levels with amazing panoramic views over the surrounding hills and Tuscan-Emilian Apennines, set just 2,5 km far from the centre of Bagnone, a medieval village with a fabulous castle.

The property consists of:

- entrance hall with stairwell, large taverna with fireplace and cellar/pantry opening onto a portico and a **garden**, kitchenette, bathroom, boiler room and two cellars on ground floor;
- hall, living room with fireplace opening onto a panoramic **terrace**, kitchen, study-store room, dressing room and bathroom with shower;
- the living room opens onto a very large **terrace** in the back of the house with a portico and a garden where it is also possible to grow vegetables, the whole on first floor;
- hall, four bedrooms, study/walk-in closet and bathroom with bath on second floor.

**Central heating (oil).**

**There is also natural gas.**

The house is sold sparingly furnished.

### **DÉTAILS TECHNIQUES**

Surface habitable

270 m<sup>2</sup>

Surface extérieure

300 m<sup>2</sup>

Niveau sonore

1 - zona silenziosa

Étages

3

Pièces

12

Chambres

5

Salles de bain

3

Jardin

200 m<sup>2</sup>

Terrain

200 m<sup>2</sup>

Cour

65 m<sup>2</sup>

Cave

50 m<sup>2</sup>

Terrasse

72 m<sup>2</sup>

Portique

17 m<sup>2</sup>

Altitude m s.n.m.

360

État

abitabile

Chauffage

Autonomo a gas metano

Vue panoramique

Oui

Vue sur les Apennins

Oui

Meublé

Oui

# Catégorie

G

MESSAGES.PROPERTY\_IMAGES



















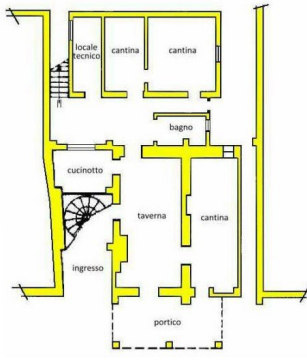




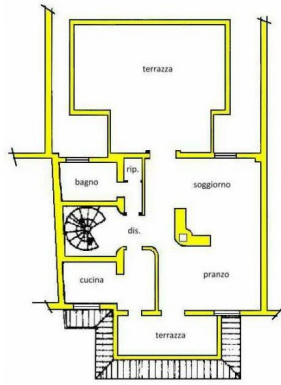




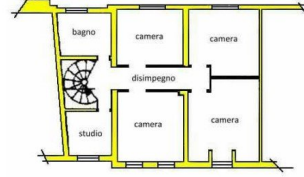




piano terra



piano primo



piano secondo