



LUNIGIANA 2000

real estate

Réf. 089

Restored stone farmhouse



DESCRIPTION

Typical **restored stone farmhouse** with over **1,5 hectares of surrounding land** set in an hillside position at 330 metres above sea level with a beautiful panoramic views and just 2 km fare from amenities.

The property comprises:

- entrance hall, built-in kitchen with wood burning stove, living room, hall with cupboard, double bedroom, single bedroom, bathroom with shower and external cellar with boiler room on ground floor;
- taverna with wood burning stove, two double bedrooms, both with ensuite with shower and cellar on lower ground floor;

Stone outbuilding comprising:

- study, bathroom with shower/laundry room and outside oven.

Central heating (propane gas and pellet).

Easy car access.

DÉTAILS TECHNIQUES

Surface habitable

190 m²

Surface extérieure

225 m²

Niveau sonore

0 - zona molto silenziosa

Source d'eau

Sorgente

Étages

2

Pièces

10

Chambres

4

Salles de bain

4

Jardin

2000 m²

Terrain

13170 m²

Cour

Oui

Cave

Oui

Place de parking

Oui

Altitude m s.n.m.

330

Classe énergétique

350.66 Kw/h m²

État

ristrutturato

Chauffage

Caldaia a pellet

Vue panoramique

Oui

Vue sur les Apennins

Oui

Meublé

Oui

Catégorie

G

MESSAGES.PROPERTY_IMAGES







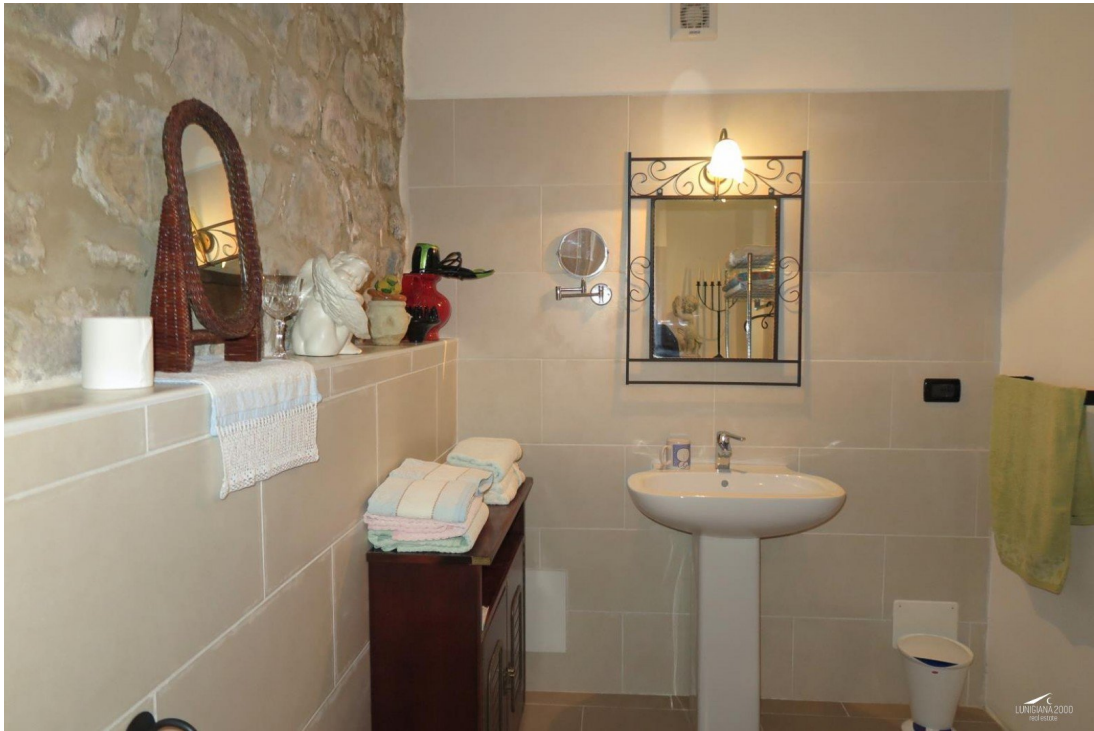












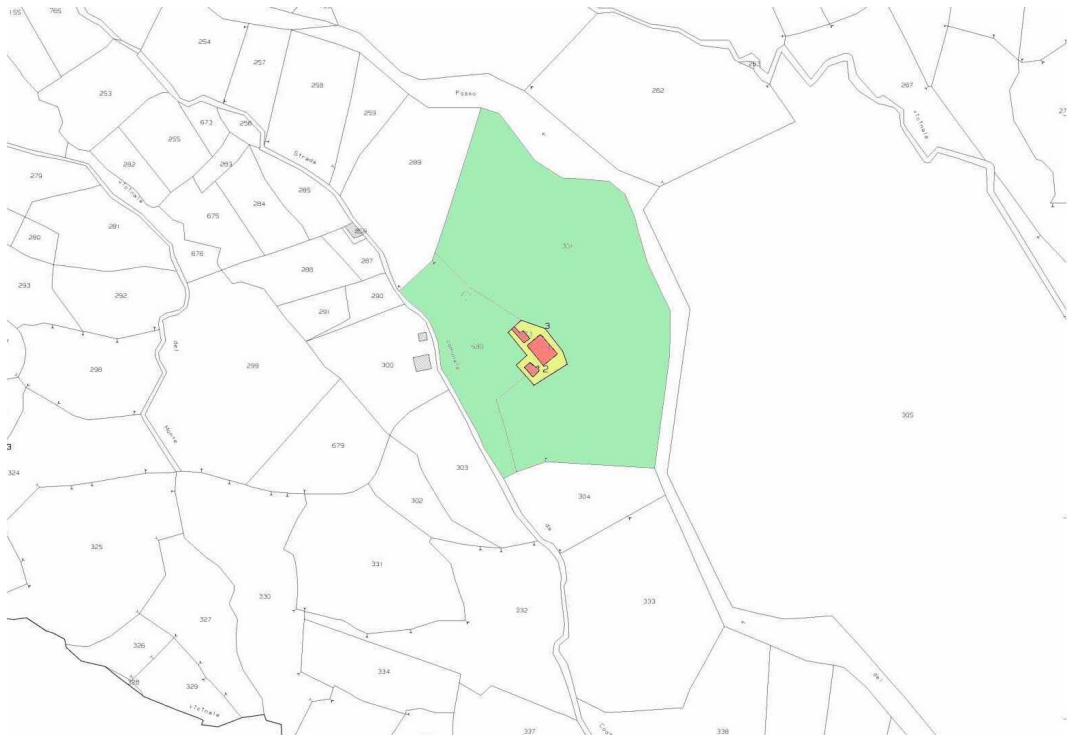


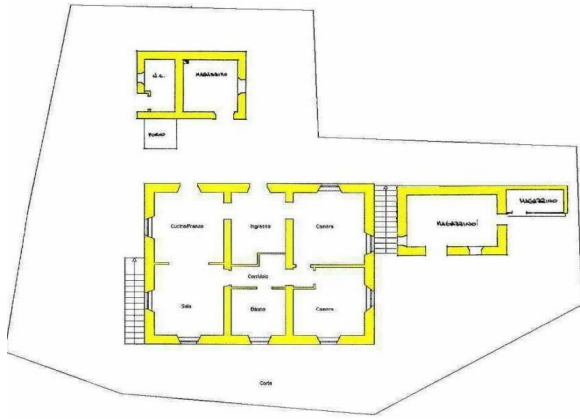




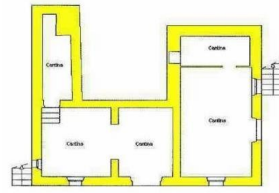




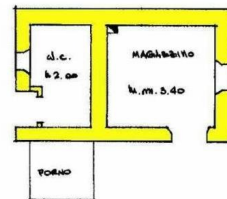




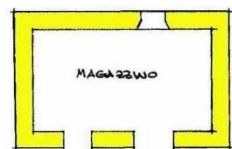
PIANO TERRA



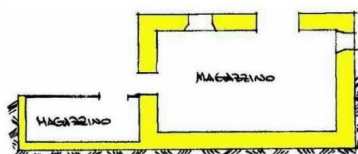
PIANO SEMINTERRATO



PIANO TERRA



PIANO TERRA



PIANO SEMINTERRATO