



LUNIGIANA 2000

real estate

Réf. 231A

Detached house



DESCRIPTION

Detached house with **surrounded land** of 2.322 sq m with olive groves and orchards set at the beginning of a small old borgo, at 360 meters above sea level at the foot of the Apuan Alps.

The property which is in very good condition and on two levels comprises:

- Entrance hall, living room, two bedrooms, bathroom with shower, cellar and **garage** on ground floor;
- Entrance hall, living room with fireplace, kitchen area with a beautiful panoramic **terrace**, sitting room, hall with pellet burning stove, three double bedrooms, another **terrace** and bathroom with bath on first floor.

Central heating (propane gas).

The two floors are joined together through an internal staircase.

DÉTAILS TECHNIQUES

Surface habitable

185 m²

Surface extérieure

200 m²

Niveau sonore

0 - zona molto silenziosa

Source d'eau

Fiume/Torrente

Étages

2

Pièces

9

Chambres

5

Salles de bain

2

Jardin

2322 m²

Terrain

2322 m²

Cour

Oui

Cave

Oui

Garage

32 m²

Place de parking

5 m²

Terrasse

Oui

Balcon

Oui

Altitude m s.n.m.

370

État

abitabile

Chauffage

Autonomo a gas propano

Vue panoramique

Oui

Meublé

Oui

Catégorie

G

MESSAGES.PROPERTY_IMAGES















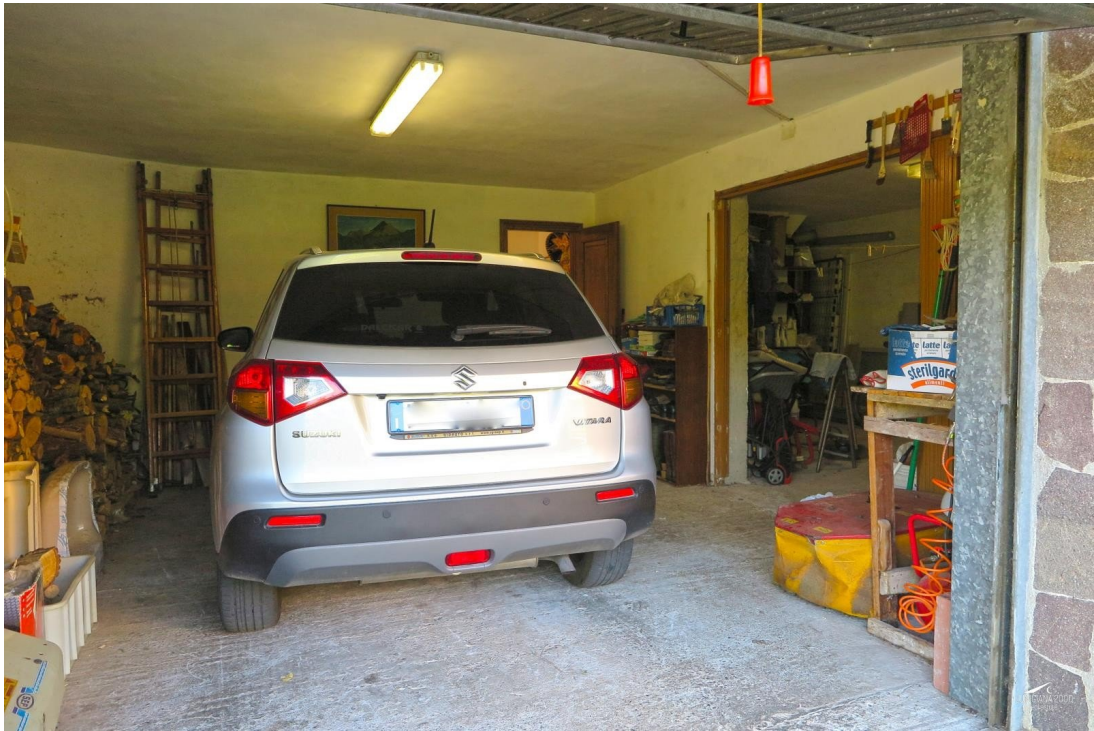






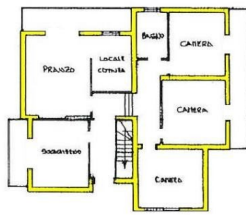




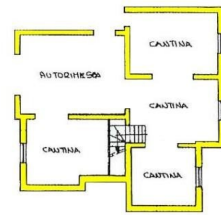








PIANO TERRA



PIANO SEMINTERRATO

