



# LUNIGIANA 2000

real estate

**Réf. 250**

---

# Characteristic stone house



## DESCRIPTION

Typical restored stone house with shared courtyard, small terrace and beautiful panoramic views over the valley set at 290 meters above sea level in an original old borgo.

The property comprises:

- Cellar on lower ground floor;
- Entrance-living room with fireplace and kitchen on ground floor;
- Hall, double bedroom, single bedroom with balcony and bathroom with bath on first floor.

Central heating (natural gas)

## DÉTAILS TECHNIQUES

Surface habitable

60 m<sup>2</sup>  
Surface extérieure  
80 m<sup>2</sup>  
Niveau sonore  
0 - zona molto silenziosa  
Source d'eau  
Fiume/Torrente  
Étages  
3  
Pièces  
3  
Chambres  
2  
Salles de bain  
1  
Cave  
Oui  
Terrasse  
Oui  
Balcon  
Oui  
Altitude m s.n.m.  
290  
État  
abitabile  
Chauffage  
Autonomo a gas metano  
Vue panoramique  
Oui  
Vue sur les Apennins  
Oui  
Meublé  
Oui

## **Catégorie**

G

MESSAGES.PROPERTY\_IMAGES

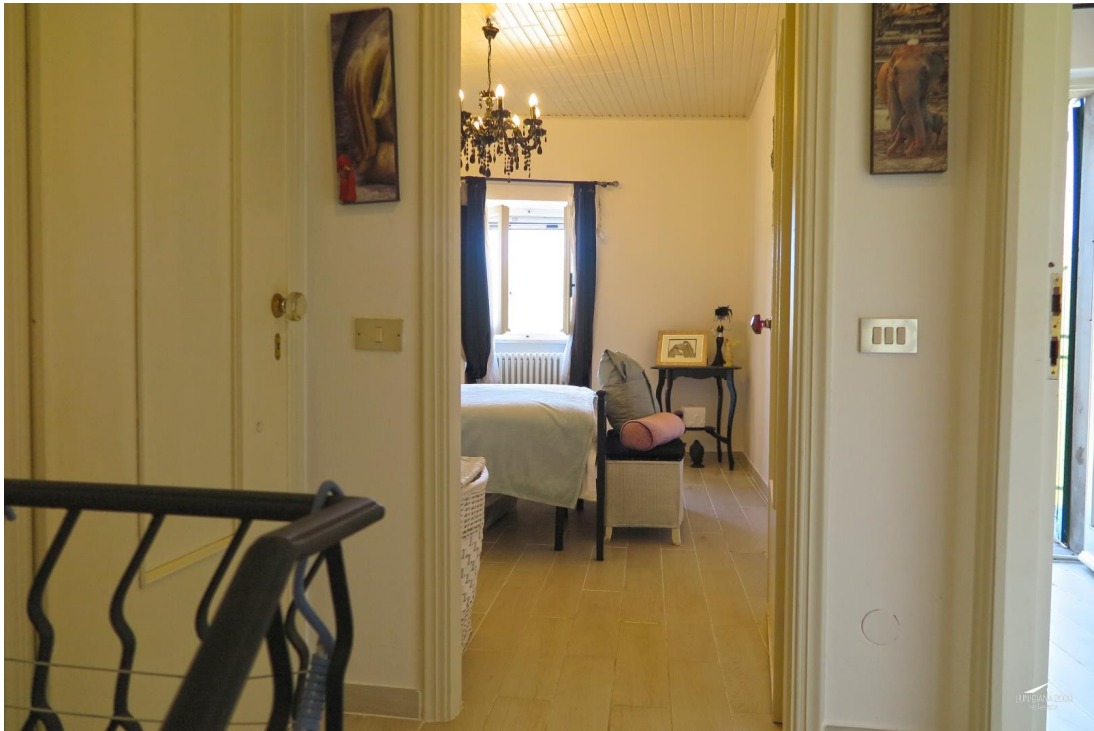
























PIANO TERRA



PIANO PRIMO

