



# LUNIGIANA 2000

real estate

**Réf. 055**

---

# New-built stone farmhouse



## DESCRIPTION

**New-built stone farmhouse** with splendid panoramic views with 5 hectares of adjacent **land** and approximately 7 hectares of further dislocated land.

The property is surrounded by beautiful countryside among oak trees, olive groves and vineyards.

The farmhouse consists of two units:

- Characteristic **portico** with panoramic views, living room with open plan kitchen, hall, two bedrooms, mezzanine, dressing room and bathroom with shower on first floor;
- Living room with open plan kitchen, hallway, bedroom, mezzanine, bathroom with shower on first floor;
- **Portico**, very large room used as a laboratory for winemaking and bathroom on the ground floor;

- Large **warehouse-garage** on lower ground floor.

**Central heating (propane gas).**

**Possibility to build a swimming pool.**

### **DÉTAILS TECHNIQUES**

Surface habitable

300 m<sup>2</sup>

Surface extérieure

350 m<sup>2</sup>

Niveau sonore

0 - zona molto silenziosa

Source d'eau

Sorgente

Étages

3

Pièces

5

Chambres

3

Salles de bain

3

Terrain

119437 m<sup>2</sup>

Cave

Oui

Garage

Oui

Place de parking

100 m<sup>2</sup>

Terrasse

Oui

Portique

Oui

Altitude m s.n.m.

400

État

ristrutturato

Chauffage

Autonomo a gas propano

Vue panoramique

Oui

Meublé

Oui

# Catégorie

G

**MESSAGES.PROPERTY\_IMAGES**















































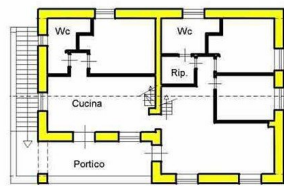
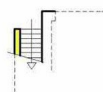




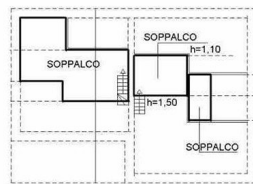




PIANO TERRA



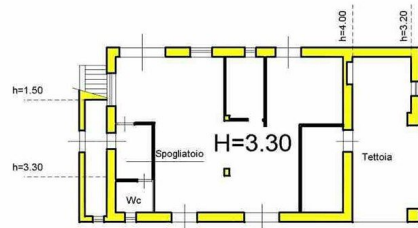
PIANO PRIMO



PIANO SECONDO



PIANO INTERRATO



PIANO TERRA  
LABORATORIO PER VINIFICAZIONE

