



LUNIGIANA 2000

real estate

Réf. 002A

Superbly restored detached house



DESCRIPTION

Stone detached farmhouse tastefully restored with a beautiful surrounding **park** of over 5.000 sq m and **outbuilding used as garage and storage** set In a wonderful natural setting, among olive trees, Turkey oaks and fruit trees, with a surprising panoramic view of the Apuan Alps.

The property, which has a typical **portico**, has two entrances on ground floor that lead to a large **veranda**, which leads to the hall with store room and stairwell to get in a characteristic living room with open plan kitchen and fireplace.

Going up through marble stairs, we reach a hallway on first floor where there is three bedrooms, bathroom and large panoramic **terrace** with stunning views over the majestic Apuan Alps.

The outbuilding of 100 sq m on one floor comprises **garage, laundry room, gym room and wood shed**, all with tiled floors, doors, windows and mosquito nets.

It is possible to build a swimming pool.

The farmhouse and the outbuilding are surrounded by a well-kept park with fruit trees and fully fenced.

The large automated gate allows car access to the property, while the small gate to the pedestrian area.

High quality of materials used for the restoration for the finishing touches, as well as for the details.

DÉTAILS TECHNIQUES

Surface habitable

220 m²

Surface extérieure

250 m²

Niveau sonore

0 - zona molto silenziosa

Étages

2

Pièces

9

Chambres

3

Salles de bain

1

Terrain

5388 m²

Cour

Oui

Cave

65 m²

Garage

35 m²

Place de parking

Oui

Terrasse

20 m²

Portique

Oui

Altitude m s.n.m.

430

État

ristrutturato

Chauffage

Autonomo a gas propano

Vue panoramique

Oui

Vue sur les Alpes Apuanes

Oui

Vue sur les Apennins

Oui

Catégorie

G

MESSAGES.PROPERTY_IMAGES











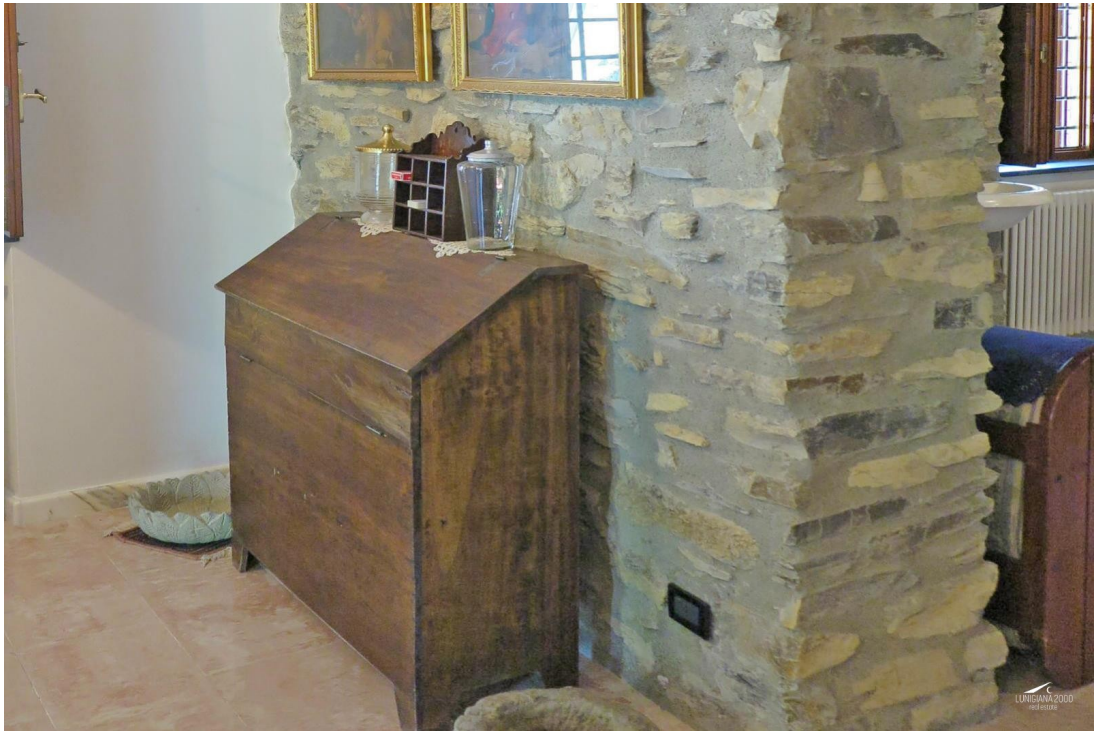














































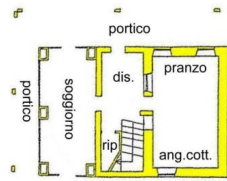
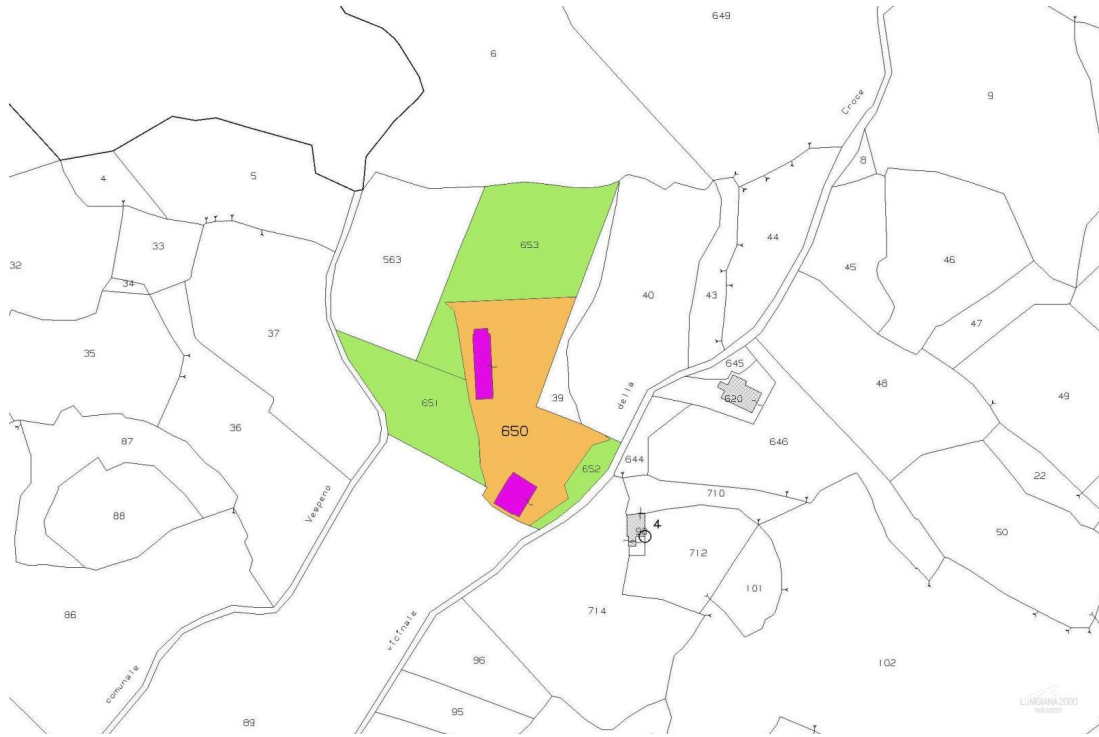












PIANO TERRA



PIANO PRIMO



PIANO TERRA