



LUNIGIANA 2000

real estate

Réf. 293A

Detached villa



DESCRIPTION

Detached large house with **courtyard and garden** of 1.544 sq m set close to amenities and just 4 km far from motorway exit.

The villa, on three levels, comprises:

- Large **portico**, entrance hall, living room with dining area, kitchen with terrace, four bedrooms with large **balcony** with panoramic views and bathroom on ground floor;
- Large suite with terrace, bathroom with bath and shower, veranda with panoramic views on first floor;
- **Garage** of 68 sq m, large cellar and boiler room on lower ground floor.

Central heating (oil)

DÉTAILS TECHNIQUES

Surface habitable

345 m²

Surface extérieure

395 m²

Niveau sonore

0 - zona molto silenziosa

Étages

3

Pièces

7

Chambres

4

Salles de bain

2

Jardin

1544 m²

Cour

Oui

Cave

70 m²

Garage

68 m²

Place de parking

Oui

Terrasse

Oui

Balcon

Oui

Portique

Oui

Altitude m s.n.m.

200

Classe énergétique

284.74 Kw/h m²

État

abitabile

Chauffage

Autonomo a gasolio

Vue panoramique

Oui

Vue sur les Alpes Apuanes

Oui

Vue sur les Apennins

Oui

Catégorie

G

MESSAGES.PROPERTY_IMAGES











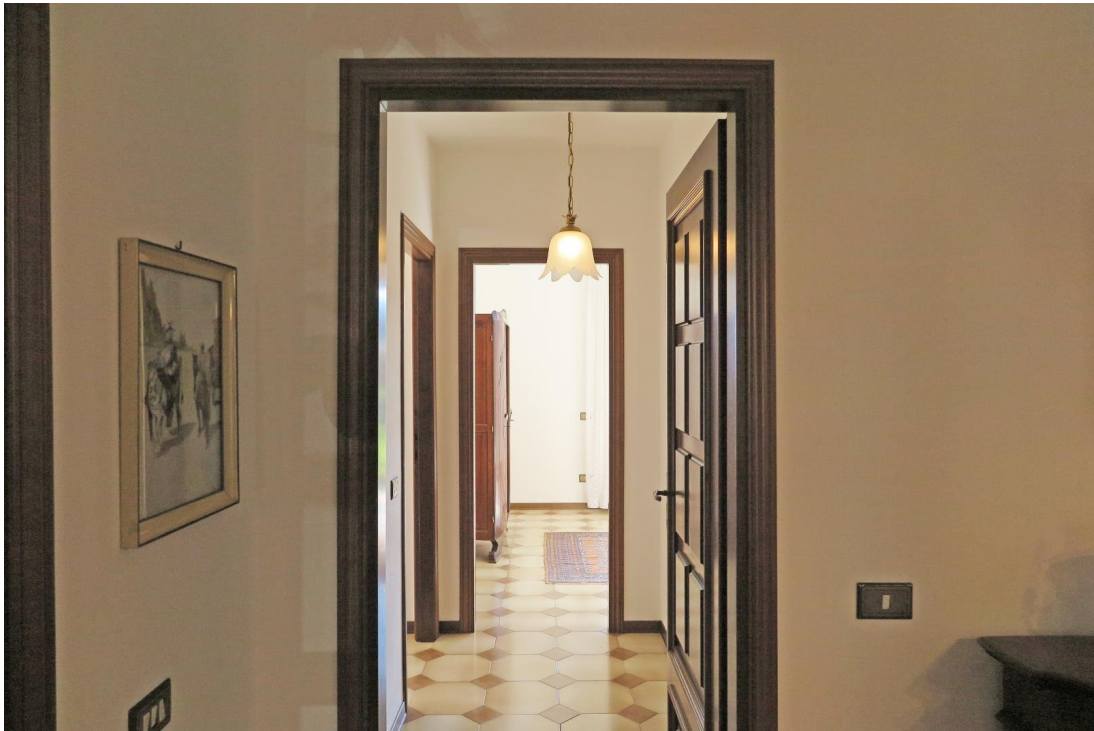








































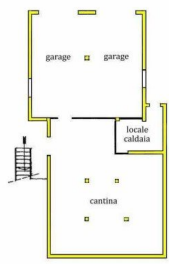




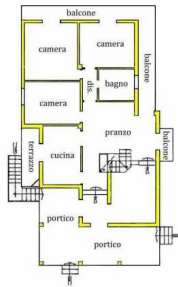








seminterrato



terra



primo