



LUNIGIANA 2000

real estate

Réf. 226

Semi-detached house



DESCRIPTION

Semi-detached house with panoramic **terrace** set in a charming hillside village, at 460 metres above sea level, where there is a bar and a restaurant and the closest facilities are just 3 kilometres far.

The property consists of:

- Entrance-kitchen, bedroom and bathroom on ground floor;
- Another Entrance-dining room, bedroom and bathroom on first floor accessible through an external staircase;
- Bedroom with **balcony** and panoramic terrace on second floor.

Central heating (natural gas).

The property also includes 26.924 sq m of land, mainly woodland.

DÉTAILS TECHNIQUES

Surface habitable

105 m²

Surface extérieure

165 m²

Niveau sonore

0 - zona molto silenziosa

Étages

3

Pièces

5

Chambres

3

Salles de bain

2

Terrain

26924 m²

Terrasse

11 m²

Balcon

2 m²

Altitude m s.n.m.

460

État

abitable

Chauffage

Autonomo a gas metano

Vue panoramique

Oui

Vue sur les Apennins

Oui

Meublé

Oui

Catégorie

G

MESSAGES.PROPERTY_IMAGES



















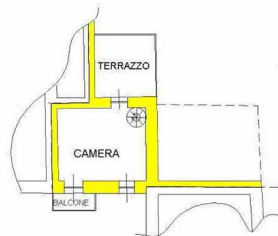




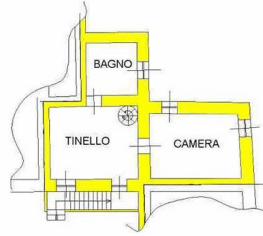




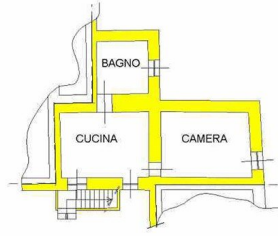




PIANO SECONDO



PIANO PRIMO



PIANO TERRA