



LUNIGIANA 2000

real estate

Réf. 313

Typical villa of early twentieth century



DESCRIPTION

Typical **villa of the early twentieth** with **courtyard and garden** of 260 sq m set in a dominant position, just 13 kilometres far from the motorway exit.

The property, on three levels, consists of:

- Entrance hall, kitchen with fireplace, study which has a direct access to the cellar on lower ground floor,
- Pantry and stairwell on ground floor;
- Rear entrance, landing and bathroom with shower on mezzanine;
- Hall, four double bedrooms and study with **balcony** on first floor;
- Landing and bathroom with shower on mezzanine;
- Two attic rooms on the upper level.

Central heating (propane gas).

Partially furnished.

Excellent solution for an accommodation business.

DÉTAILS TECHNIQUES

Surface habitable

290 m²

Surface extérieure

425 m²

Niveau sonore

0 - zona molto silenziosa

Étages

3

Pièces

10

Chambres

4

Salles de bain

2

Jardin

260 m²

Terrain

260 m²

Cour

Oui

Cave

Oui

Place de parking

Oui

Terrasse

Oui

Balcon

Oui

Altitude m s.n.m.

310

État

abitabile

Chauffage

Autonomo a gas propano

Vue panoramique

Oui

Catégorie

G

MESSAGES.PROPERTY_IMAGES



































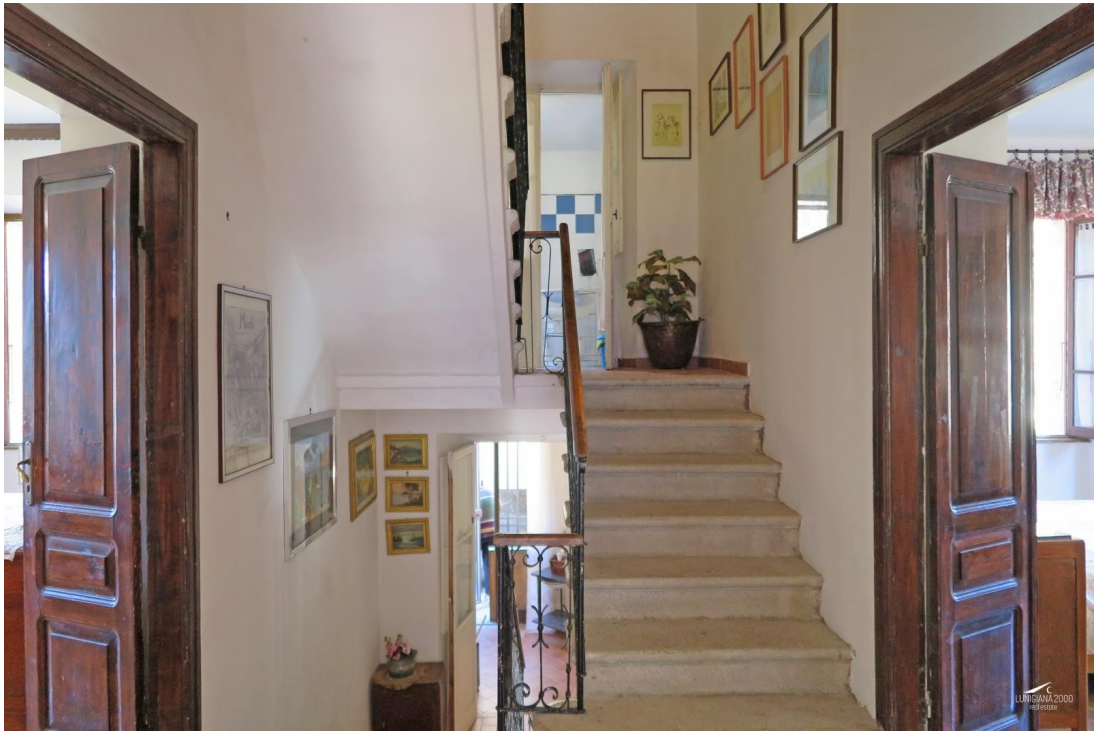


















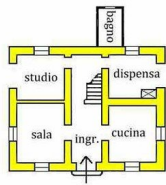




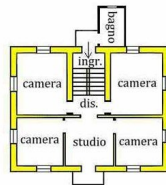




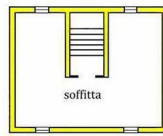




piano terra



piano primo



piano secondo

