



# LUNIGIANA 2000

real estate

**Réf. 005L**

# Village house



## DESCRIPTION

Typical **stone house whose restoration requires finishing** with beautiful views over the valley set in an hillside village at 460 metres above sea level.

The property, which is very close to a bar and a grocery shop, consists of:

- Entrance hall, stairwell and cellar on ground floor, hallway, living room, kitchen with thermo-fireplace on first floor;
- Hall, bedroom and bathroom on first floor

## Central heating (natural gas)

## DÉTAILS TECHNIQUES

Surface habitable

110 m<sup>2</sup>

Surface extérieure

160 m<sup>2</sup>

Niveau sonore

1 - zona silenziosa

Étages

3

Pièces

6

Chambres

1

Salles de bain

1

Altitude m s.n.m.

460

État

da ristrutturare

Chauffage

Termo-Camino

Vue panoramique

Oui

Vue sur les Alpes Apuanes

Oui

MESSAGES.PROPERTY\_IMAGES













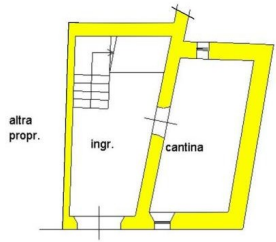




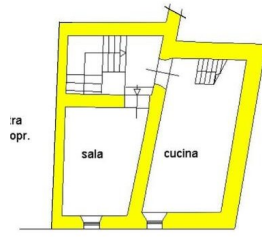




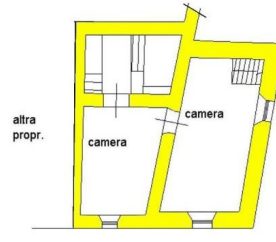




PIANTA PIANO TERRA H.290



PIANTA PIANO PRIMO H.2,34



PIANTA PIANO SECONDO H.2,74