



LUNIGIANA 2000

real estate

Réf. 010L

VILLA BY THE SEA



DESCRIPTION

Detached villa with 1.000 sq m of **garden**, **car port for three cars** and **photovoltaic system** of 7kw/h and central heating with heating pump set 1 kilometre far from beaches.

The property comprises:

- Cellar of approximately 30 sq m on lower ground floor;
- Living room with fireplace, kitchen, two bedrooms, two bathrooms and **portico** on ground floor;
- Dining room, kitchen, two bedrooms, two bathrooms, store room and **two terraces** on first floor.

DÉTAILS TECHNIQUES

Surface habitable

272 m²

Surface extérieure

368 m²

Niveau sonore

1 - zona silenziosa

Étages

2

Pièces

11

Chambres

4

Salles de bain

4

Jardin

Oui

Terrain

1040 m²

Cour

230 m²

Cave

28 m²

Place de parking

5 m²

Terrasse

10 m²

Portique

48 m²

Altitude m s.n.m.

10

État

ristrutturato

Chauffage

Autonomo a gas metano

Catégorie

F

MESSAGES.PROPERTY_IMAGES

































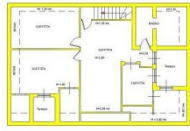




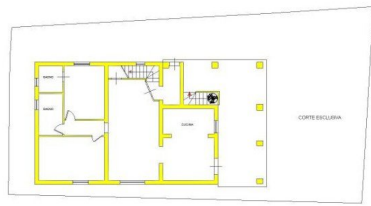




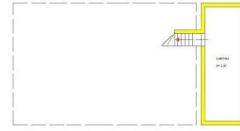




PIANTA PIANO PRIMO



PIANTA PIANO TERRA



PIANO SEMINTERRATO

