



LUNIGIANA 2000

real estate

Réf. 480A

Stone village house



DESCRIPTION

Restored stone house with garden and gazebo situated just 2 kilometres far from a charming medieval village with amenities.

The property, on three levels, consists of:

Two cellars on ground floor;

- **Balcony**, kitchen, double bedroom and bathroom with shower on first floor;
- Toilet, study and attic room on second floor.

Central heating (natural gas)

Fully furnished.

DÉTAILS TECHNIQUES

Surface habitable

60 m²

Surface extérieure

110 m²

Niveau sonore

0 - zona molto silenziosa

Étages

3

Pièces

3

Chambres

1

Salles de bain

2

Jardin

145 m²

Cave

Oui

Terrasse

Oui

Portique

Oui

Altitude m s.n.m.

370

Classe énergétique

250.00 Kw/h m²

État

ristrutturato

Chauffage

Autonomo a gas metano

Vue panoramique

Oui

Meublé

Oui

Catégorie

G

MESSAGES.PROPERTY_IMAGES































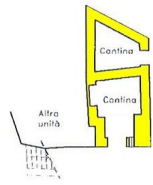




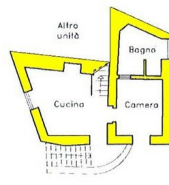




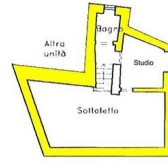




PIANO TERRA



PIANO PRIMO



SECONDO PIANO

LUMENANA 2000
relazione

